

*NRSC  
GUIDELINE*

# NATIONAL RADIO SYSTEMS COMMITTEE

**NRSC-G300-A  
Radio Data System (RDS) Usage  
Guideline  
April 2014**



NAB: 1771 N Street, N.W.  
Washington, DC 20036  
Tel: (202) 429-5346 Fax: (202) 775-4981



CEA: 1919 South Eads Street  
Arlington, VA 22202  
Tel: (703) 907-4366 Fax: (703) 907-7598

Co-sponsored by the Consumer Electronics Association and the National Association of Broadcasters  
<http://www.NRSCstandards.org>

## NOTICE

NRSC Standards, Guidelines, Reports and other technical publications are designed to serve the public interest through eliminating misunderstandings between manufacturers and purchasers, facilitating interchangeability and improvement of products, and assisting the purchaser in selecting and obtaining with minimum delay the proper product for his particular need. Existence of such Standards, Guidelines, Reports and other technical publications shall not in any respect preclude any member or nonmember of the Consumer Electronics Association (CEA) or the National Association of Broadcasters (NAB) from manufacturing or selling products not conforming to such Standards, Guidelines, Reports and other technical publications, nor shall the existence of such Standards, Guidelines, Reports and other technical publications preclude their voluntary use by those other than CEA or NAB members, whether to be used either domestically or internationally.

Standards, Guidelines, Reports and other technical publications are adopted by the NRSC in accordance with the NRSC patent policy. By such action, CEA and NAB do not assume any liability to any patent owner, nor do they assume any obligation whatever to parties adopting the Standard, Guideline, Report or other technical publication.

*Note: The user's attention is called to the possibility that compliance with this Guideline may require use of an invention covered by patent rights.*

*By publication of this Guideline, no position is taken with respect to the validity of this claim or of any patent rights in connection therewith. The patent holder has, however, filed a statement of willingness to grant a license under these rights on reasonable and nondiscriminatory terms and conditions to applicants desiring to obtain such a license. Details may be obtained from the publisher.*

This Guideline does not purport to address all safety problems associated with its use or all applicable regulatory requirements. It is the responsibility of the user of this Guideline to establish appropriate safety and health practices and to determine the applicability of regulatory limitations before its use.

Published by  
CONSUMER ELECTRONICS ASSOCIATION  
Technology & Standards Department  
1919 S. Eads St.  
Arlington, VA 22202

NATIONAL ASSOCIATION OF BROADCASTERS  
Science and Technology Department  
1771 N Street, NW  
Washington, DC 20036

©2014 CEA & NAB. All rights reserved.

*This document is available free of charge via the NRSC website at [www.NRSCstandards.org](http://www.NRSCstandards.org). Republication or further distribution of this document, in whole or in part, requires prior permission of CEA or NAB.*

## FOREWORD

The first Radio Data System (RDS) Standard was developed in Europe in 1984, followed by the NRSC version, the RBDS Standard (known now as NRSC-4), in 1992. Since then, numerous updates to these Standards have been published. RDS technology has proliferated and is now widely supported by both broadcasters and receiver manufacturers. The NRSC, in publishing the most recent version of NRSC-4, NRSC-4-B (see [1]), has achieved a greater level of harmonization with the European version of the Standard (IEC-620106) and adopted a new, simpler format for the document which highlights the remaining differences between these two Standards.

With the advent of digital radio systems, most notably the FCC's authorization of in-band/on-channel (IBOC) digital radio in the U.S. in 2002, broadcasters began upgrading their infrastructures to support data broadcasting at an accelerated rate. One consequence of this was a dramatic increase in the use of the RDS FM subcarrier. Recognizing this, the NRSC first published this Guideline in September 2012 with the goals of helping broadcasters and receiver manufacturers to make the best use of RDS technology and providing a more useful and consistent RDS experience for consumers. Publication of the –A version of this Guideline in 2014 continues this process by augmenting and refreshing the original content of the document and by expanding the material on use of RDS for emergency alerting.

The information contained in this NRSC Guideline is the work of the RDS Usage Working Group (RUWG), a subgroup of the Radio Broadcast Data System (RBDS) Subcommittee of the NRSC. The principal author of the first version of this document was Alan Jurison, Senior Operations Engineer – Engineering and Systems Integration with Clear Channel Media and Entertainment. Some of the material included was originally developed by Mr. Jurison and published in a series of trade journal articles and presentations at the NAB Broadcast Engineering Conference (BEC). At the time of first adoption of this Guideline, the RUWG was chaired by Steve Davis, Clear Channel Media and Entertainment, and for adoption of NRSC-G300-A, the RUWG was chaired by Alan Jurison, Clear Channel Media and Entertainment. For adoption of both NRSC-G300 and NRSC-G300-A, the RBDS Subcommittee was chaired by Dan Mansergh, KQED Public Radio, and the NRSC chairman was Milford Smith, Greater Media, Inc.

The NRSC is jointly sponsored by the Consumer Electronics Association and the National Association of Broadcasters. It serves as an industry-wide standards-setting body for technical aspects of terrestrial over-the-air radio broadcasting systems in the U.S.

# CONTENTS

<b>1</b>	<b>SCOPE .....</b>	<b>1</b>
<b>2</b>	<b>REFERENCES .....</b>	<b>1</b>
2.1	NORMATIVE REFERENCES .....	1
2.2	INFORMATIVE REFERENCES .....	1
2.3	SYMBOLS AND ABBREVIATIONS .....	2
<b>3</b>	<b>BACKGROUND.....</b>	<b>3</b>
<b>4</b>	<b>RDS INSTALLATION.....</b>	<b>4</b>
4.1	HARDWARE INSTALLATION.....	4
4.2	RDS INJECTION AND PILOT SYNCHRONIZATION.....	5
4.3	RDS INJECTION FOR STATIONS WITH 67 KHZ ANALOG SUBCARRIERS .....	6
4.4	INITIAL PROGRAMMING.....	6
4.5	DATA FEEDS .....	7
<b>5</b>	<b>SELECT FEATURES OF RDS.....</b>	<b>10</b>
5.1	PROGRAM IDENTIFICATION (PI).....	10
5.1.1	<i>Designing the appropriate Program Identification (PI) code for boosters, translators, and simulcasts</i> 11	
5.2	PROGRAM TYPE (PTY).....	12
5.3	PROGRAM TYPE NAME (PTYN) CODES .....	18
5.4	TRAFFIC PROGRAMMING (TP)/TRAFFIC ANNOUNCEMENT (TA) FLAGS .....	18
5.5	MUSIC/SPEECH (MS).....	18
5.6	DECODER IDENTIFICATION AND DYNAMIC PTY INDICATOR (DI) .....	18
5.7	ALTERNATIVE FREQUENCY (AF) .....	18
5.8	CLOCK TIME (CT) GROUP.....	19
<b>6</b>	<b>USING RDS FOR PROGRAM ASSOCIATED DATA .....</b>	<b>20</b>
6.1	OVERVIEW .....	20
6.2	RECEIVER DISPLAY LENGTH CONSIDERATIONS .....	20
6.3	CONFUSION BETWEEN PS AND RT .....	20
6.4	ALBUM NAME DATA .....	21
6.5	DATA FORMATTING, TRUNCATION, AND CAPITALIZATION .....	21
6.6	EXTRA TEXT (“NOW PLAYING...BY...ON”).....	21
6.7	DATA AND SONG TIMING.....	21
6.8	USING RADIOTEXT (RT) FOR PAD .....	22
6.8.1	<i>RT formatting.....</i>	<i>22</i>
6.8.2	<i>RadioText (RT) send rate.....</i>	<i>22</i>
6.8.3	<i>RT length padding.....</i>	<i>25</i>
6.9	USING SCROLLING PROGRAM SERVICE (PS) FOR PAD .....	25
6.9.1	<i>PS formatting.....</i>	<i>27</i>
6.10	USING RADIOTEXT+ (RT+) FOR PAD .....	28
6.10.1	<i>RT+ implementation for broadcasters .....</i>	<i>28</i>
6.10.1.1	<i>Tag 2 length logic inversion .....</i>	<i>29</i>
6.10.1.2	<i>RT+ interleaving – having multiple RT+ tags per single RT.....</i>	<i>29</i>
<b>7</b>	<b>USING RDS FOR TRAFFIC INFORMATION .....</b>	<b>31</b>
7.1	OVERVIEW .....	31

7.2	TRAFFIC USING RDS-TMC .....	31
7.2.1	Location Table Country Code (LTCC) definitions – old and new .....	31
<b>8</b>	<b>USING RDS FOR EMERGENCY ALERTING .....</b>	<b>32</b>
8.1	OVERVIEW .....	32
8.1.1	Brief history of RDS Alerting in the United States .....	33
8.1.2	Use of RDS for Emergency Alerting Overview .....	33
8.1.3	Typical Radio Station Installation and Testing .....	34
8.2	ALERT FM SYSTEM .....	35
8.2.1	ALERT FM data input flow to the RDS encoder .....	36
8.2.2	Typical radio station installation for ALERT FM .....	36
8.2.3	Programming of the RDS encoder’s Group Sequence with ALERT FM system .....	36
8.2.3.1	Group Sequence ratios .....	36
8.2.3.2	Alerting priorities .....	37
8.2.3.3	Group Sequence programming example .....	37
8.2.3.4	Injection levels .....	38
8.3	NPR LABS EMERGENCY ALERTING ODA .....	38
8.3.1	Technical overview .....	39
8.3.2	The ODA in action .....	39
8.3.2.1	Receiver wakeup preamble .....	40
8.3.2.2	Rapid geo code sequence .....	40
8.3.2.3	Text interleave sequence .....	40
8.3.2.4	End of Transmission (EOT) marker .....	40
8.3.3	ODA performance .....	41
<b>9</b>	<b>RDS AND CHARACTER/FONT SETS .....</b>	<b>46</b>
9.1	OVERVIEW .....	46
9.2	DOLLAR SIGN DISPLAY PROBLEMS .....	46
9.2.1	Recommended actions for equipment vendors .....	47
9.2.2	Recommended actions for broadcasters .....	47
9.2.3	Recommended actions for receiver manufacturers .....	48
9.3	OTHER 7-BIT CHARACTER MAP DIFFERENCES .....	48
9.4	SELECTED 8-BIT CHARACTER MAP DIFFERENCES .....	48
9.5	RDS CHARACTER SET AND HD RADIO CHARACTER SET .....	49
	<b>ANNEX 1: BROADCASTER INFORMATION ON RDS USAGE – RDS USE CASES .....</b>	<b>50</b>
	BROADCASTER TRAFFIC CONSORTIUM .....	50
	CLEAR CHANNEL MEDIA AND ENTERTAINMENT .....	50
	COX MEDIA GROUP .....	51
	<b>ANNEX 2: RDS PROVIDERS LIST .....</b>	<b>53</b>
	<b>ANNEX 3: RDS PROVIDERS LIST SELF-NOTIFICATION FORM .....</b>	<b>57</b>

## FIGURES

FIGURE 1. RDS ENCODER INSTALLATION – LOOP-THROUGH METHOD.....	4
FIGURE 2. RDS ENCODER INSTALLATION – DISCRETE INPUT WITH SAMPLE OR “SIDECHAIN” METHOD .....	5
FIGURE 3. AN EXAMPLE FROM THE INOVONICS 730 USER MANUAL OF A PROPERLY SYNCHRONIZED RDS SUBCARRIER IN QUADRATURE WITH THE PILOT, AS SHOWN FROM AN OSCILLOSCOPE .....	6
FIGURE 4. DIRECT AUTOMATION – RDS FEED .....	7
FIGURE 5. LOCAL DATA MANAGEMENT .....	8
FIGURE 6. SERVICE PROVIDER DATA MANAGEMENT .....	8
FIGURE 7. FM BROADCAST COVERAGE IN THE UNITED STATES.....	32
FIGURE 8. EXAMPLE OF HOW RDS EMERGENCY ALERT MESSAGE INFORMATION FLOWS – THIS EXAMPLE IS TAKEN FROM AN IMPLEMENTATION BY THE MISSISSIPPI EMERGENCY MANAGEMENT AGENCY EMERGENCY OPERATIONS CENTER.....	34
FIGURE 9. STATION-SPECIFIC ALERTING OVERVIEW .....	35
FIGURE 10. NPR LABS EMERGENCY ALERTING ODA SYSTEM OVERVIEW .....	39
FIGURE 11: SYSTEM BLOCK DIAGRAM FOR MEASURING ODA PERFORMANCE METRICS .....	41

## TABLES

TABLE 1. MAIN FEATURE REPETITION RATES.....	10
TABLE 2. LIST OF NIELSEN AUDIO FORMATS WITH SUGGESTED PTY CODES DEFINED IN NRSC-4-B .....	13
TABLE 3: RECOMMENDED RADIOTEXT (RT) SEND RATES FOR STATIONS WITH NO SIGNIFICANT ODA USE.....	24
TABLE 4. RECOMMENDED GROUP SEQUENCE PERCENTAGES FOR STATIONS WITH TMC TRAFFIC ODA USE.....	25
TABLE 5. CHARACTER SET TRANSLATIONS FOR COMMON DOLLAR SIGN CHARACTERS.....	46
TABLE 6. TEST STRINGS FOR TESTING DOLLAR SIGN BEHAVIOR .....	47
TABLE 7. IMPORTANT SEVEN-BIT CHARACTERS THAT MAY SHOW UP INCORRECTLY ON RECEIVERS.....	48
TABLE 8. IMPORTANT EIGHT-BIT CHARACTERS AND THEIR RDS EQUIVALENTS .....	49

# RDS USAGE GUIDELINE

## 1 SCOPE

This is an informative Guideline document which sets forth recommendations on the use of the Radio Data System (RDS) FM data subcarrier in the U.S. for broadcasters, broadcast equipment manufacturers, receiver manufacturers, and data service providers.

## 2 REFERENCES

### 2.1 Normative References

This is an informative specification. There are no normative references.

### 2.2 Informative References

The following references contain information that may be useful to those implementing this Guideline document. At the time of publication the editions indicated were valid. All standards are subject to revision, and users of this Guideline document are encouraged to investigate the possibility of applying the most recent editions of the standards listed below.

- [1] *NRSC-4-B United States RBDS Standard – Specification of the Radio Broadcast Data System*, National Radio Systems Committee, April 2011, <http://www.nrscstandards.org/download.asp?file=nrsc-4-B.pdf>
- [2] *IEC 62106/Ed.3, Specification of the Radio Data System (RDS) for VHF/FM sound broadcasting in the frequency range from 87.5 MHz to 108.0 MHz*, International Electrotechnical Commission (IEC), Edition 3.0, 2013
- [3] *NRSC-G200-A, Bandwidth Harmonization of RDS and IBOC Program Service Data (PSD) Guideline*, National Radio Systems Committee, September, 2007, <http://www.nrscstandards.org/download.asp?file=NRSC-G200-A.pdf>
- [4] *Coding of RadioText Plus information (RT+)*, RDS TS – Annex P, RDS Forum TS 2008, R08\_008\_3
- [5] *Radio Data System (RDS) – Receiver Products and Characteristics – Methods of Measurement*, IEC 62634/Ed.2, 2013
- [6] *NRSC-R300 Program Associated Data (PAD) Field Length Study*, National Radio Systems Committee, November, 2011, <http://www.nrscstandards.org/Reports/NRSC-R300.pdf>
- [7] *Information Technology - 8-bit single-byte coded graphic character sets - Part 1: Latin Alphabet 1*, ISO/IEC 8859-1:1998, International Organization for Standardization (ISO), [http://www.iso.org/iso/iso\\_catalogue/catalogue\\_tc/catalogue\\_detail.htm?csnumber=28245](http://www.iso.org/iso/iso_catalogue/catalogue_tc/catalogue_detail.htm?csnumber=28245)
- [8] *Broadcaster Traffic Consortium web site*, [www.radiobtc.com](http://www.radiobtc.com)
- [9] *Total Traffic Network web site*, [www.totaltraffic.com](http://www.totaltraffic.com)
- [10] *Alert FM web site*, [www.alertfm.com](http://www.alertfm.com)
- [11] *IPAWS Radio Broadcast Data System (RBDS) Study*, Federal Emergency Management Agency, September 29, 2010, <http://www.fema.gov/media-library/assets/documents/90051>

- [12] *NRSC-5-C, IBOC Digital Radio Broadcasting Standard*, Reference Document 1028s rev. D (Program service data), National Radio Systems Committee, September 2011, <http://www.nrscstandards.org/download.asp?file=NRSC-5-C.asp>
- [13] *NRSC-G301, Creation and Distribution Practices for Audio Program Metadata Guideline*, National Radio Systems Committee, April 2013, <http://www.nrscstandards.org/download.asp?file=NRSC-G301.pdf>

## 2.3 Symbols and abbreviations

In this Guideline the following abbreviations are used:

<b>AID</b>	Application Identification
<b>BTC</b>	Broadcaster Traffic Consortium
<b>CAP</b>	Common Alerting Protocol
<b>CEA</b>	Consumer Electronics Association
<b>CMAS</b>	Commercial Mobile Alert System
<b>EAN</b>	Emergency Action Notification
<b>EAS</b>	Emergency Alert System
<b>EOT</b>	End of transmission
<b>FCC</b>	Federal Communications Commission (U.S.)
<b>FEMA</b>	Federal Emergency Management Agency (U.S.)
<b>FM</b>	Frequency Modulation
<b>IBOC</b>	In-Band/On-Channel
<b>IPAWS</b>	Integrated Public Alert Warning System
<b>LTN</b>	Location Table Number
<b>LTCC</b>	Location Table Country Code
<b>NAB</b>	National Association of Broadcasters
<b>NASBA</b>	National Alliance of State Broadcasting Associations
<b>NRSC</b>	National Radio Systems Committee
<b>NWS</b>	National Weather Service
<b>ODA</b>	Open Data Application
<b>PAD</b>	Program Associated Data
<b>PI</b>	Program Identification
<b>PICC</b>	Program Identification Country Code
<b>PRSS</b>	Public Radio Satellite System®
<b>PS</b>	Program Service
<b>PSD</b>	Program Service Data
<b>PTY</b>	Program Type
<b>PTYN</b>	Program Type Name
<b>RDS</b>	Radio Data System
<b>RBDS</b>	Radio Broadcast Data System
<b>RUWG</b>	RDS Usage Working Group
<b>RT</b>	RadioText
<b>RT+</b>	RadioText+ ("plus"), an industry-standard ODA extension to RT
<b>SCA</b>	Subsidiary Communications Authority
<b>SMS</b>	Short Message Service
<b>STL</b>	Station-Transmitter Link
<b>TMC</b>	Traffic Message Channel
<b>UECP</b>	Universal Encoder Communication Protocol
<b>VHF</b>	Very High Frequency
<b>WEA</b>	Wireless Emergency Alerts



### 3 BACKGROUND

The purpose of this Guideline is to provide broadcasters, receiver manufacturers, data service providers and other users with information that will help them make the best use of RDS technology and provide a more useful and consistent RDS experience for consumers. The material which follows was discussed at length over many months in meetings of the NRSC's RBDS Usage Working Group (RUWG) and represents the consensus opinion of that group.

RBDS is the US version of a European standard, RDS. In this document, we generally use the term "RDS" unless specifically referring to the U.S. version or history.

While the use of RDS in the U.S. only became widespread with the rollout of digital radio services starting in the mid-2000's, RDS was developed by the public broadcasters collaborating within the European Broadcasting Union (EBU) from about 1975. The first specification was issued by the EBU in March 1984. RDS technology take-off in radio receivers was relatively slow, as the first RDS car radios were all high-end models that were fairly expensive. However within 10 years, there were already over 50 million RDS car radios sold, and by 2004 the total had reached 200 million (these units were mostly sold outside of the U.S.).

In February 1990, discussion started about standardizing RDS for the U.S. under the auspices of the NRSC. The RBDS Standard was adopted by the NRSC on January 8, 1993, consisting of the major components of the European RDS Standard but also with some important differences, including the following:<sup>1</sup>

- Program Type definitions – due to differing broadcast styles, some of the program type (PTY) code definitions (i.e. Jazz, Rock, etc.) differ between RDS and RBDS;
- Program Identification coding – North American program identification (PI) codes differ in functionality in three ranges. This affects alternate frequency switching and regionalization;
- "Dynamic" Program Service name – the RBDS Standard allows "nondistracting" changes to the program service (PS) field, while the RDS Standard strictly forbids dynamic changes to the PS;
- ID Logic feature (IDL)/RDS updates to In Receiver Database (IRDS) – a licensed feature which allowed the receiver to identify the call sign and format of non-RDS FM and AM broadcast stations via a built in database. This database may be updated via an Open Data Application (ODA);
- AMRDS – the original RBDS standard reserved a section for a possible AM equivalent to FM RDS.
- Emergency Alert System (EAS) ODA – an ODA was developed ("Annex Q") to carry emergency information compatible with the U.S. Federal Communication Commissions (FCC) EAS protocol. This public ODA also offered increased consumer receiver functionality with emergency messaging.

Since the adoption of the original RBDS Standard, the NRSC has adopted modifications in 1998, 2004 (the official designation was changed to NRSC-4 with this version), 2005 (NRSC-4-A), and 2011 (NRSC-4-B, the current version; see [1]). NRSC-4-B differs from the earlier versions in that it is written in a "difference" format, only including those portions of the Standard which differ from the European version.

Outside of the U.S. the major RDS-focused group is the RDS Forum ([www.rds.org.uk](http://www.rds.org.uk)), created in 1993, which is a non-profit international professional industry association that has the objective to promote and maintain RDS technology. The RDS Forum serves its members and also acts as an efficient contact network for experience exchange regarding the use and correct implementation of the RDS technology in the many different countries involved. The RDS Forum has been the leader in Europe in advancing the technology and has been successful in gaining CENELEC and IEC adoption of the RDS specification.

---

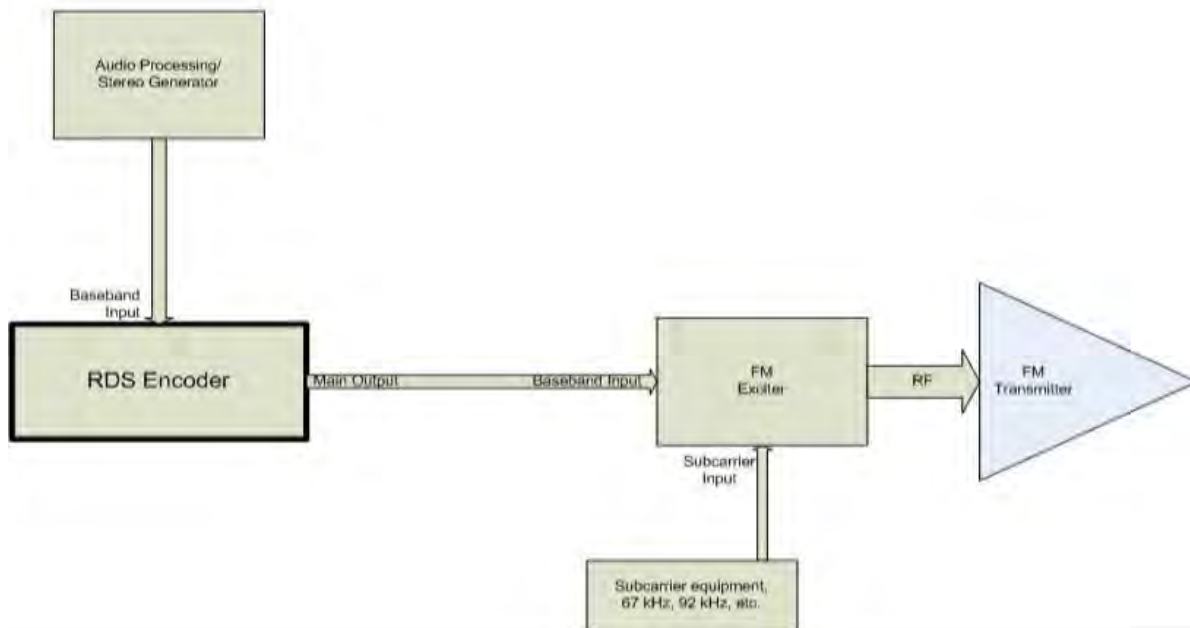
<sup>1</sup> Note that many of these differences, including ID Logic, AM RDS, and the "Annex Q" EAS ODA were removed from the NRSC version of the Standard starting with the NRSC-4-B version, so as to achieve greater harmonization with the European version of the Standard and in recognition of the fact that these features were not in use or were never developed.

## 4 RDS INSTALLATION

### 4.1 Hardware installation

RDS is a component of FM broadcasting that uses an encoder to create a signal which is combined with other components of the FM baseband including the mono (L+R) and stereo multiplex (L-R) program audio-derived signals. The RDS signal, also called the RDS subcarrier, is a 1,187.5 bits per second (bps) data stream (with approximately 670 bps of usable data) encoded into a 4 kHz-wide suppressed-carrier AM subcarrier centered at 57 kHz.

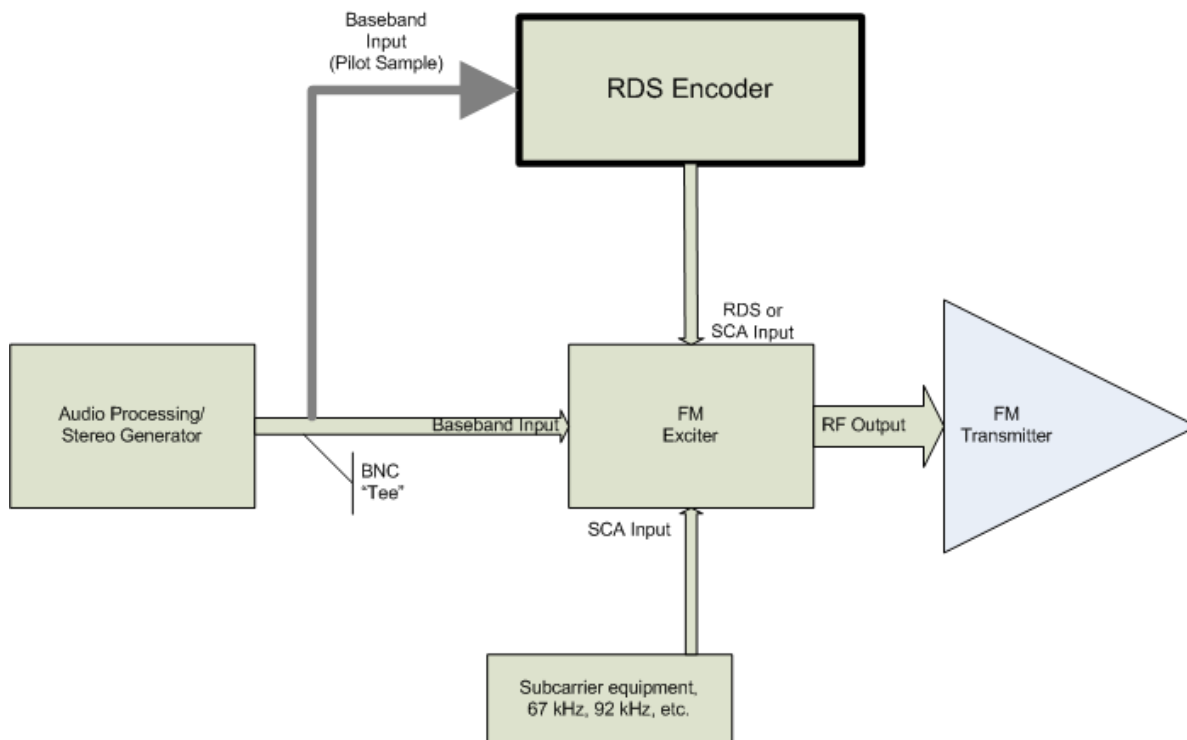
The hardware that creates the RDS signal is called an RDS encoder. It is installed in the FM program chain either between the audio processing/stereo generator and the (analog) baseband input of an FM exciter (Figure 1), or, the encoder is connected to a separate input on the FM exciter designed for an RDS encoder or for subcarriers (Figure 2). Both these installation methods provide for the feeding of a sample of the 19 kHz pilot to the encoder. The 57 kHz RDS subcarrier frequency is the third harmonic of the 19 kHz pilot and therefore performs in similar fashion as the stereo L-R signal. Receivers should detect the 19 kHz pilot then use multiples of that frequency to demodulate the L-R as well as the RDS subcarrier.



**Figure 1. RDS encoder installation – loop-through method**

When using the discrete input or “sidechain” method shown in Figure 2, it is important to confirm that the RDS encoder is configured NOT to feed the baseband input signal to its output. It is possible to install an RDS encoder as shown in Figure 2 without connecting the FM baseband to the RDS encoder. Improvements in frequency stability and quality of both transmitting and receiving equipment can allow the RDS encoder to “free run” or use an internal 19 kHz reference but this is not an optimal installation practice.

RDS encoders are typically installed at the transmitter site; however the physical location of the equipment will largely be based on the type of studio-to-transmitter link (STL) that is in use and the data connectivity available between the sites.



**Figure 2. RDS encoder installation – discrete input with sample or “sidechain” method**

## 4.2 RDS injection and pilot synchronization

The RDS signal exists as a low power (with respect to the main channel audio), 57 kHz amplitude-modulated data subcarrier on an analog or hybrid IBOC FM signal. When installing an RDS encoder, there are configuration options to control the overall output level. The NRSC-4 Standard does not include a recommended subcarrier injection level.

This Guideline recommends a nominal RDS injection level of 6% (4.5 kHz) of the 75 kHz total modulation of an analog FM signal (or the analog portion of a hybrid IBOC FM signal). Values below this have been found to be acceptable for mobile receivers; however, smaller, portable receivers tend to work with an injection level closer to 6% or even higher, generally not to exceed 7% for most conditions.

Setting RDS injection levels is best done with a calibrated modulation monitor that supports RDS injection level measurement. It is important to be precise about setting of modulation and injection levels, so broadcasters should make sure the proper test equipment is used. It is worth the effort to be precise. When establishing an injection level operating point, broadcasters should listen to the demodulated main-channel audio signal, and any analog subcarrier audio signals, to insure that the RDS signal is not causing audible interference.

It is recommended to follow the instructions for the specific RDS encoder used to synchronize and align the RDS signal with the 19 kHz pilot. There are stations where RDS encoders are not synchronized or have become unsynchronized, and this has been known to cause issues with RDS reception. It is recommended that broadcasters observe the RDS encoder’s status regarding the pilot sync over time. If

the 19 kHz pilot sample into the encoder is marginal, there have been situations where an encoder was going in and out of sync as a result. When an encoder is going in and out of sync, it can cause RDS reception errors, thus creating a bad end-user experience by delaying the decoding of the RT and skipping of PS frames.

Another added benefit of going through the RDS encoder manufacturer's synchronization process besides better RDS performance at the receiver is that a properly synced RDS encoder will utilize a subcarrier signal that is in quadrature with the 19 kHz pilot; this will slightly reduce the modulation peaks of the subcarrier without reducing their actual levels, providing for more room for the main channel modulation (see Figure 3).



**Figure 3. An example from the Inovonics 730 user manual of a properly synchronized RDS subcarrier in quadrature with the pilot, as shown from an oscilloscope**

#### **4.3 RDS Injection for stations with 67 kHz analog subcarriers**

Stations that utilize 67 kHz analog subcarrier need to be aware that higher injection levels may result in increased crosstalk from RDS into the 67 kHz subcarrier audio. A study was done in 2002 by Modulation Sciences (under a contract with Minnesota Radio Talking Book) to test a wide variety of 67 and 92 kHz analog subcarrier receivers and how their performance was impacted by RDS and multipath interference. The RDS tests were done using two levels of RDS injection, 11.1% and 16%. It was found that the 11.1% injection level operation increased crosstalk into virtually all of the 67 kHz analog subcarrier receivers tested, from 7 to 20 dB.

#### **4.4 Initial programming**

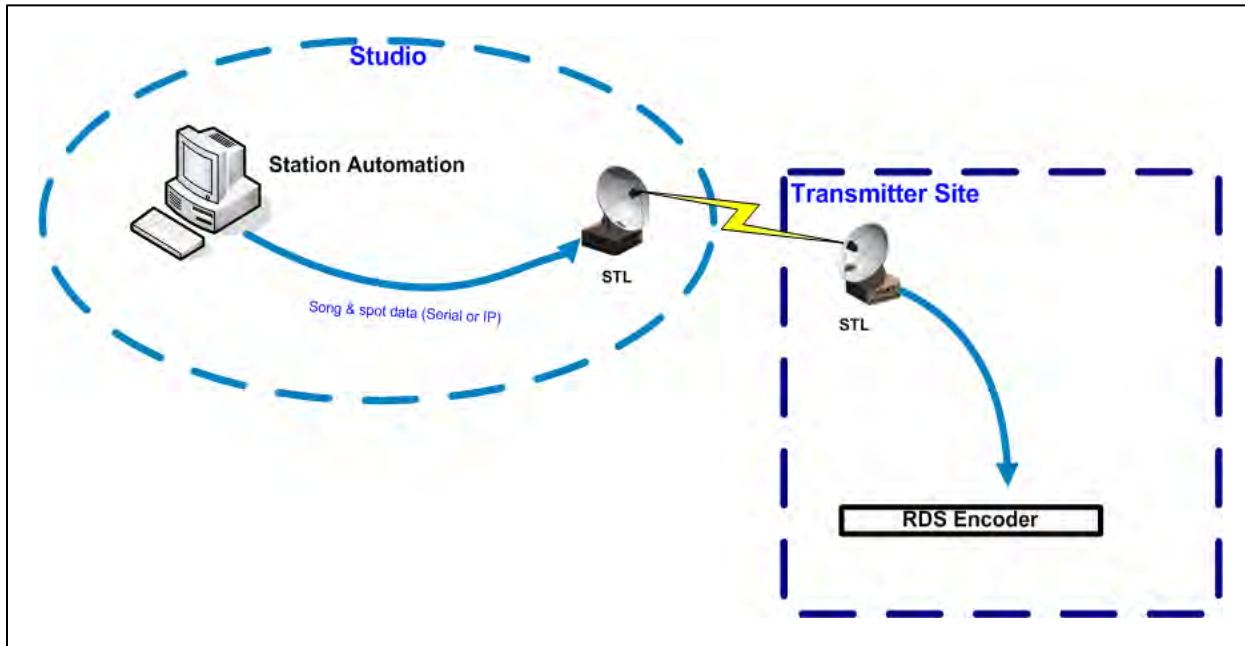
RDS encoders typically have on-board memory which allows configuration settings, encoder programming and certain other data to be saved on-board. In locations where data connectivity is difficult or impossible, stations should use this on-board memory to take advantage of RDS features and even create a scrolling display of messages.

Certain RDS data, like PI, PTY, TP, AF and M/S are programmed into the encoder during installation, even if the station is using a live data feed. In older encoders this data may need to be factory-encoded using firmware although most encoders now allow changes to be made in the field using a computer and a serial or IP connection to the device.

Many RDS encoders allow RadioText (RT) messages to be loaded into memory, allowing FM stations to send data for display on RDS receivers, even if the station is not able to send live now-playing or program associated data. Many encoders even allow such messages to be scheduled so that, for example a different message could be scrolled during each program or could be used to identify the scheduled on-air talent.

## 4.5 Data Feeds

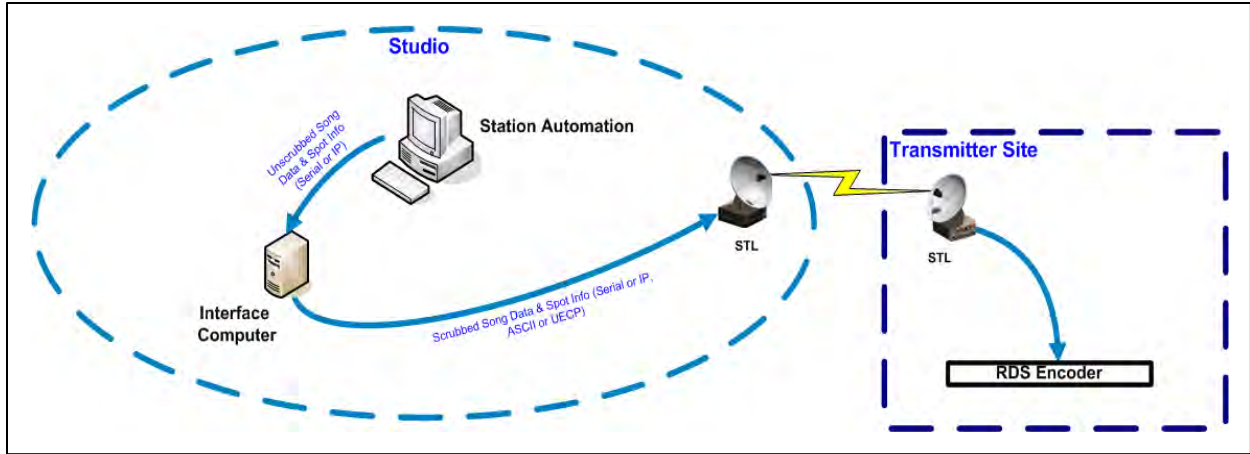
Most RDS encoders provide a means to send live data to the RDS encoder. This is achieved using either a serial data connection or an Internet protocol (IP) connection. Since the bandwidth of the entire RDS bit stream is only 1,187.5 bits per second, integrating the data into a station STL or transmitter site data connection will not require significant overhead. Typically stations feed live data using a data source like the radio automation playback system. Many radio automation providers can export live data based on the on-air programming and export this data to RDS encoders either as a function of the base automation system or as an extra option. Automation equipment manufacturers and RDS equipment suppliers should be able to provide guidance on appropriate means to interconnect the equipment.



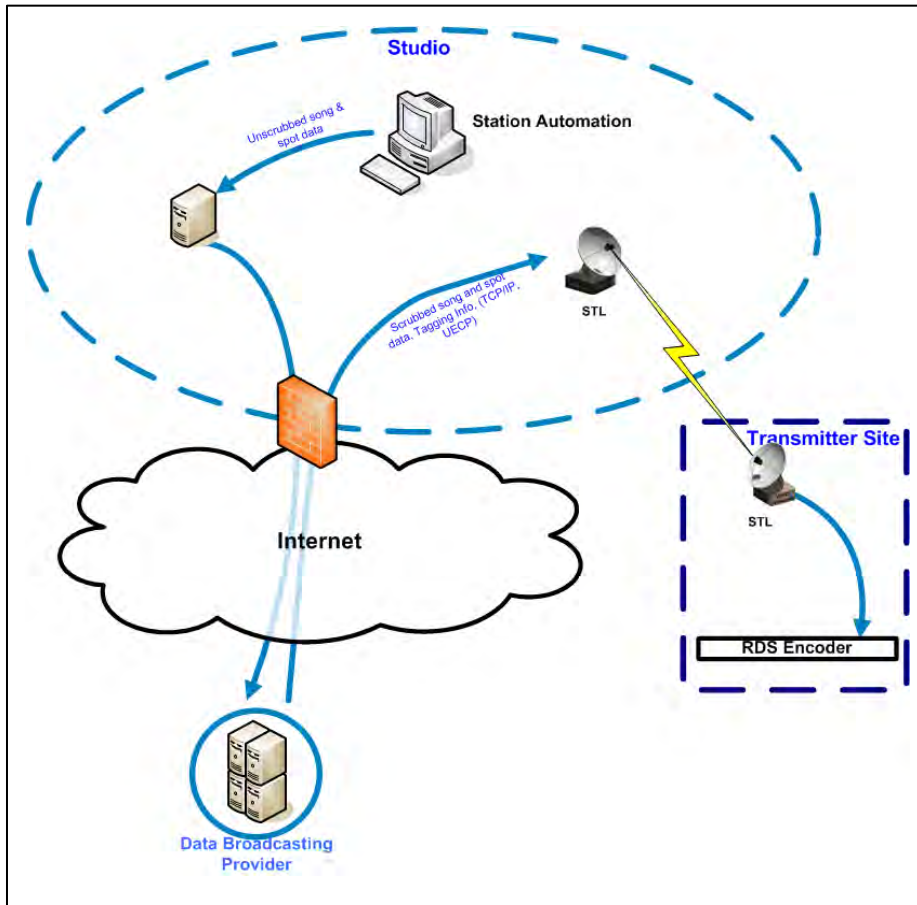
**Figure 4. Direct automation – RDS feed**

The basic connection is illustrated in Figure 4 which illustrates a data feed from a station automation directly to the RDS encoder. Most automation systems can provide this using either an RS-232 Serial connection or using TCP/IP. The RDS encoder will be programmed with static parameters such as PI and repetition rate. Live data will typically appear as RT and/or a scrolling PS display.

The native mode of communication of most RDS encoders is known as the Universal Encoder Communication Protocol (UECP). This is still the most effective means to access RDS features like RT+, song tagging, TMC (Traffic Message Channel) data, paging, etc. Most popular RDS encoders also offer access to RT and other more common live data features to be sent using ASCII (ISO 8859-1) format character data. Stations that wish to exploit more RDS features may find it advantageous to employ a device to aggregate data and convert it to UECP. This could be done using a computer on-site (Figure 5) or by establishing a connection to an outside service provider (Figure 6).



**Figure 5. Local data management**



**Figure 6. Service provider data management**

The data management computer can provide a means to “scrub” or “sanitize” the feed from the automation system and optimize the data for RDS displays. The local computer or offsite data provider can be used to manage message scheduling, dayparting, and message repetition rates; and to provide

access to RDS features like RT+. Outside data broadcasting providers can also provide a means to incorporate special features such as Apple iTunes song tagging, and news or traffic data.

When stations use a live data feed, special arrangements will be required to accommodate long form programming, live programming, and network feeds. During these periods most station automation systems will not be sending new data to the encoder so an RDS display will show the last live event, (e.g., the last song played before a pre-recorded talk show or network program). During these circumstances the integrated message scheduling features of some RDS encoders can be used or an intermediate device, a service provider, or even a network data feed could be used to provide the relevant messages.

It should be noted that the NRSC has developed a guideline, NRSC-G301, which provides a data standard/framework which supports live or network programming feeds to communicate to the automation system the relevant program content [13]. For example, a syndicated music show from a network provider could publish the programs content (song title/artist) that the automation playback system could then export to the RDS encoder as if it were playing the music locally.

There are a number of data service providers that may offer hardware and services to manage RDS data. Each supplier will have individual requirements and capabilities that will have an impact on the data paths as displayed above. A reference list of providers appears in ANNEX 2: RDS Providers List.

## 5 SELECT FEATURES OF RDS

While the RDS Standard provides for a host of features, there are some features that are more widely used than others. Discussed in this section are details about and considerations regarding usage of some of the most frequently used RDS features. Most of those features are included in Table 1 (taken from the NRSC-4-B standard).

**Table 1. Main feature repetition rates<sup>2</sup>**

Main Features	Group types which contain this information	Appropriate repetition rate per sec.
Program Identification (PI) code	all	11.4 <sup>a</sup>
Program Type (PTY) code	all	11.4 <sup>a</sup>
Traffic Program (TP) identification code	all	11.4 <sup>a</sup>
Program Service (PS) name	0A, 0B	1
Alternative frequency (AF) code pairs	0A	4
Traffic announcement (TA) code	0A, 0B, 14B, 15B	4
Decoder identification (DI) code	0A, 0B, 15B	1
Music/speech (M/S) code	0A, 0B, 15B	4
RadioText (RT) message	2A, 2B	0.2 <sup>b</sup>
Enhanced other networks information (EON)	14A	up to 2 <sup>c</sup>

<sup>a</sup> Valid codes for this item will normally be transmitted with at least this repetition rate whenever the transmitter carries a normal broadcast program.

<sup>b</sup> A total of 16 type 2A groups are required to transmit a 64 character RadioText message and therefore to transmit this message in 5 seconds, 3.2 type 2A groups will be required per second.

<sup>c</sup> The maximum cycle time for the transmission of all data relating to all cross-referenced program services shall be less than 2 minutes.

### 5.1 Program Identification (PI)

The original purpose of the PI code was to identify the station in a unique way. NRSC-4-B stipulates the method for calculating the appropriate PI code, to generate a hexadecimal number that would be entered into the encoder. There are a few software utilities available that will convert the station call letters to the 4-digit hex PI code. Most RDS encoder manufacturers should be able to provide information on this calculation.

Those interested in implementing PI code translation on the receiver side need to be aware that there are two PI code encoding methods used by broadcasters in the US

- “Call letter conversion” encoding method, as described in NRSC-4-B Section D.7.1; and
- An optional method for use with traffic information systems, as described in NRSC-4-B Section D.7.4.

As a result of the popularity of the second method, there are stations that do not send call letters through PI codes. In other words, the receiver cannot rely on PI codes to provide call letters for U.S. broadcast

<sup>2</sup> NRSC-4-B [1], Table 4.



stations. For this reason, it is recommended that receiver manufacturers decode the RadioText Plus (RT+) StationName.Short field in place of back-calculating the call sign using PI codes.

Besides situations where the method described in NRSC-4-B Section D7.4 is used, there may be other cases where stations are not able to use a PI code derived from call letters. In such cases, an appropriate PI code must be assigned. Original PI code creation may need to follow to station or company agreements, or may need to follow additional technical requirements.

For example, if an FM station uses translators and boosters and that station employs the Alternate Frequency (AF) capabilities of RDS, then RDS encoders at the booster and translator sites would send the same PI code as the main station transmitter and not the PI codes corresponding to the particular booster's and/or translator's call signs. A receiver with the ability to use the AF feature would then be able to recognize that the booster or translator was the appropriate alternate signal because of the matching PI codes. This is an RDS capability that is used more commonly in Europe but has not been used widely in the U.S to date.

### **5.1.1 Designing the appropriate Program Identification (PI) code for boosters, translators, and simulcasts**

Increasingly, FM translators are used for cross-service stations (AM, FM hybrid IBOC multicast channels, etc.). In such cases, PI code selection or creation may not be obvious. The following section provides some guidance for PI code selection in these cases.

For stations which follow the following conditions:

- 1) Translator or booster carrying primary stations' FM analog/IBOC main channel;
- 2) Translator carrying FM hybrid IBOC multicast of primary station which is simulcast of an AM with unique call letters for market;
- 3) Main FM station or translator programming of an in-market AM with unique call letters.

The NRSC recommends using the PI code calculated from the call sign of the primary AM or FM station originating programming, as defined in Section D.7.1 of NRSC-4-B.

For stations which exhibit any of the following conditions:

- 4) Translator carrying FM hybrid IBOC multicast channel of a primary station that is a simulcast of an in-market AM with non-unique call letters (i.e., the primary is WXXX-FM but is a simulcast of AM station WXXX);
- 5) Main FM station or translator carrying programming of an in-market AM with non-unique call letters (the AM is WXXX, but there is already a WXXX-FM that is not the main FM station or translator under consideration);
- 6) Translator carrying the FM hybrid IBOC multicast channel of a primary station which is a unique program non-associated with any existing station.

Under conditions 4) through 6) above, the NRSC recommends carefully selecting another call sign from the RDS PI code space outlined in [1] Table D.7 (page 20 only) using the following guidelines:

- a) Avoid using a PI code based on a call sign assigned by the FCC to another station in the U.S. By exception, if desired, the stations listed in conditions 4) through 6) above may consider swapping the "W" or "K" prefix of the call sign with a "K" or "W" respectively, if such a swap will not cause confusion with a station licensed to that call sign in that market or nearby markets.

For example, an FM translator of AM station WSEN in Syracuse would consider transmitting a PI code "KSEN" to avoid duplicating the WSEN-FM PI code while retaining the last three characters. The real KSEN AM and FM stations are some 2000 miles away. This is the only method by which the NRSC recommends choosing a PI code that represents a call sign in use by another station under conditions 4) through 6) above.

- b) If desired, the stations listed in conditions 4) through 6) above may consider using an unassigned call sign by referring to the FCC database. At any given time, there are more four-letter call signs not assigned to AM and FM stations than are assigned. If at some time in the future a station or stations using an unassigned call sign to generate a locally unique PI code learns that the call sign is no longer unassigned, the station or stations should select a new unassigned call sign to generate a new locally unique PI code.

Broadcasters and receiver manufacturers are discouraged from relying on generation of call signs from PI codes for station identification to listeners for the reasons given in Section 5.1 and are encouraged to rely on other methods outlined in NRSC-4-B and discussed in this Guideline to identify stations on user displays (*i.e.*, RT+ StationName.Short). Broadcasters are expected to verify they have not selected a duplicate PI code that another broadcaster has selected. This is best done by calling or meeting with other broadcasters in the local area.

## 5.2 Program Type (PTY)

The PTY code should be used as a format description for the station. Receivers that fully support PTY use the code to categorize stations and provide ways for listeners to search for radio programming. It's not unusual for stations to choose a PTY code that doesn't strictly adhere to their format definition. The PTY code will often more closely match a marketing position or public image, as opposed to a strict, industry definition of the station's format.

The Nielsen Audio (formerly Arbitron) format list was used as the basis for developing the PTY codes defined in NRSC-4-B. Nielsen Audio uses terms of art that may or may not reflect listener's understanding or listening. For example the format "Urban" is not necessarily an accurate description. Likewise, Spanish-formatted stations will likely not want their stations to appear on public radios under the label "Language" or "Foreign Language." With the release of the NRSC-4-B standard, the PTY codes for "Hip Hop", "Spanish Talk", and "Spanish Music" were adopted and receivers are now beginning to appear on the market that recognize these new PTY codes. Stations using these codes may appear as "Undefined" on older radio displays.

Table 2 is a list of Nielsen Audio formats (from a Spring 2013 listing) with a suggested PTY assignment. Note that some formats are shown with multiple possible PTY codes. It's best to consider this list as a starting place for discussion with station programming and marketing departments to decide on a station's appropriate PTY classification. It should also be noted that the program types listed are compatible within the corresponding definitions in the HD Radio™ digital radio system, and considerations should be made to synchronize the PTY settings in the appropriate configuration sections of an HD Radio Importer and Exporter.<sup>3</sup>

---

<sup>3</sup> See pg. 59 of [12] for a list of genres supported by the NRSC-5-C Standard.

NRSC-G300-A

Table 2. List of Nielsen Audio formats with suggested PTY codes defined in NRSC-4-B

Nielsen Audio Format	PTY Code		Program Type	8 Character	16 Character	Definition
	Binary	Decimal				
80s Hits	00111	7	Adult Hits	Adlt_Hit	Adult_Hits	An up-tempo contemporary hits format with no hard rock and no rap
Active Rock	00101	5	Rock	Rock	Rock	Album cuts
Adult Contemporary (AC)	01000	8	Soft Rock	Soft_Rck	Soft_Rock	Album cuts with a generally soft tempo
Adult Hits	00111	7	Adult Hits	Adlt_Hit	Adult_Hits	An up-tempo contemporary hits format with no hard rock and no rap
Adult Standards/MOR	01101	13	Nostalgia	Nostalga	Nostalgia	Big-band music
Album Adult Alternative (AAA)	00101	5	Rock	Rock	Rock	Album cuts
Album Oriented Rock (AOR)	00110	6	Classic Rock	Cls_Rock	Classic_Rock	Rock oriented oldies, often mixed with hit oldies, from a decade or more ago
All News	00001	1	News	News	News	News reports, either local or network in origin
All Sports	00011	3	Sports	Sports	Sports	Sports reporting, commentary, and/or live event coverage, either local or network in origin
Alternative	00101	5	Rock	Rock	Rock	Album cuts
Blues	01101	13	Nostalgia	Nostalgia	Nostalgia	Big-band music
Children's Radio	10101	21	Personality	Persnlty	Personality	A radio show where the on-air personality is the main attraction
Christian AC	10011	19	Religious Music	Rel_Musc	Religious_Music	Music programming with religious lyrics
Classic Country	01010	10	Country	Country	Country	Country music, including contemporary and traditional styles
Classic Hits	00110	6	Classic Rock	Cls_Rock	Classic_Rock	Rock oriented oldies, often mixed with hit oldies, from a decade or more ago

NRSC-G300-A

Table 2 (continued). List of Nielsen Audio formats with suggested PTY codes defined in NRSC-4-B

Nielsen Audio Format	PTY Code		Program Type	8 Character	16 Character	Definition
	Binary	Decimal				
Classic Rock	00110	6	Classic Rock	Cls_Rock	Classic_Rock	Rock oriented oldies, often mixed with hit oldies, from a decade or more ago
Classical	01111	15	Classical	Classicl	Classical	Mostly instrumentals, usually orchestral or
Comedy	00100	4	Talk	Talk	Talk	A radio show where comedy is the main attraction
Contemporary Christian	10011	19	Religious Music	Rel_Musc	Religious_Music	Music programming with religious lyrics
Contemporary Inspirational	10011	19	Religious Music	Rel_Musc	Religious_Music	Music programming with religious lyrics
Country	01010	10	Country	Country	Country	Country music, including contemporary and traditional styles
Easy Listening	01100	12	Soft	Soft	Soft	A cross between adult hits and classical, primarily non-current soft-rock originals
Educational	10110	22	Public	Public	Public	Programming that is supported by listeners and/or corporate sponsors instead of advertising
Family Hits	01100	12	Soft	Soft	Soft	A cross between adult hits and classical, primarily non-current soft-rock originals
Gospel	10011	19	Religious Music	Rel_Musc	Religious_Music	Music programming with religious lyrics
Hot AC	01001	9	Top 40	Top_40	Top_40	Hits, often encompassing a variety of rock
Jazz	01110	14	Jazz	Jazz	Jazz	Mostly instrumental, includes both traditional jazz and more modern "smooth jazz"
Latino Urban	11001	25	Spanish Music	Musc_Esp	Musica_Espanol	Music programming in the Spanish language
Mainstream Rock	00101	5	Rock	Rock	Rock	Album cuts

NRSC-G300-A

Table 2 (continued). List of Nielsen Audio formats with suggested PTY codes defined in NRSC-4-B

Nielsen Audio Format	PTY Code		Program Type	8 Character	16 Character	Definition
	Binary	Decimal				
Mexican Regional	11001	25	Spanish Music	Musc_Esp	Musica_Espanol	Music programming in the Spanish language
Modern AC	00111	7	Adult Hits	Adlt_Hit	Adult_Hits	An up-tempo contemporary hits format with no hard rock and no rap
New AC (NAC)/Smooth Jazz	10001	17	Soft Rhythm and Blues	Soft_R&B	Soft_R_&_B	Rhythm and blues with a generally soft tempo
New Country	01010	10	Country	Country	Country	Country music, including contemporary and traditional styles
News/Talk/Information	00010	2	Information	Inform	Information	Programming that is intended to impart ad
	00100	4	Talk	Talk	Talk	Call-in and/or interview talk shows either local or national in origin
Nostalgia	01101	13	Nostalgia	Nostalgia	Nostalgia	Big-band music
Oldies	01011	11	Oldies	Oldies	Oldies	Popular music, usually rock, with 80% or greater non-current music
Other	00000	0	No program type or Undefined	None	None	
Pop Contemporary Hit Radio	01001	9	Top 40	Top_40	Top_40	Hits, often encompassing a variety of rock
Religious	10100	20	Religious Talk	Rel_Talk	Religious_Talk	Call-in shows, interview programs, etc. with a religious theme
Rhythmic AC	10001	17	Soft Rhythm and Blues	Soft_R&B	Soft_R_&_B	Rhythm and blues with a generally soft tempo
	10000	16	Rhythm and Blues	R_&_B	Rhythm_and_Blues	A wide range of musical styles, often called "urban"
Rhythmic Contemporary Hit Radio	11010	26	Hip-Hop	Hip hop	Hip hop	Popular music incorporating elements of rap, rhythm-and-blues, funk, and soul
	01001	9	Top 40	Top_40	Top_40	Hits, often encompassing a variety of rock

**NRSC-G300-A**

**Table 2 (continued). List of Nielsen Audio formats with suggested PTY codes defined in NRSC-4-B**

Nielsen Audio Format	PTY Code		Program Type	8 Character	16 Character	Definition
	Binary	Decimal				
Rhythmic Oldies	10000	16	Rhythm and Blues	R_&_B	Rhythm_and_Blues	A wide range of musical styles, often called "urban"
Smooth AC	10001	17	Soft Rhythm and Blues	Soft_R&B	Soft_R_&_B	Rhythm and blues with a generally soft tempo
Soft AC	01100	12	Soft	Soft	Soft	A cross between adult hits and classical, primarily non-current soft-rock originals
Southern Gospel	10011	19	Religious Music	Rel_Musc	Religious_Music	Music programming with religious lyrics
Spanish Adult Hits	11001	25	Spanish Music	Musc_Esp	Musica_Espanol	Music programming in the Spanish language
Spanish Contemporary	11001	25	Spanish Music	Musc_Esp	Musica_Espanol	Music programming in the Spanish language
Spanish Contemporary Christian	11001	25	Spanish Music	Musc_Esp	Musica_Espanol	Music programming in the Spanish language
Spanish Hot AC	11001	25	Spanish Music	Musc_Esp	Musica_Espanol	Music programming in the Spanish language
Spanish News/Talk	11000	24	Spanish Talk	Habl_Esp	Hablar_Espanol	Call-in shows, interview programs, etc. in the Spanish language
Spanish Oldies	11001	25	Spanish Music	Musc_Esp	Musica_Espanol	Music programming in the Spanish language
Spanish Religious	11001	25	Spanish Music	Musc_Esp	Musica_Espanol	Music programming in the Spanish language
Spanish Sports	11000	24	Spanish Talk	Habl_Esp	Hablar_Espanol	Call-in shows, interview programs, etc. in the Spanish language
Spanish Tropical	11001	25	Spanish Music	Musc_Esp	Musica_Espanol	Music programming in the Spanish language
Spanish Variety	11000	24	Spanish Talk	Habl_Esp	Hablar_Espanol	Call-in shows, interview programs, etc. in the Spanish language

NRSC-G300-A

Table 2 (continued). List of Nielsen Audio formats with suggested PTY codes defined in NRSC-4-B

Nielsen Audio Format	PTY Code	PTY Code	Program Type	8 Character	16 Character	Definition
	Binary	Decimal				
Talk/Personality	00100	4	Talk	Talk	Talk	Call-in and/or interview talk shows either local or national in origin
	10101	21	Personality	Persnlty	Personality	A radio show where the on-air personality is the main attraction
Tejano	11001	25	Spanish Music	Musc_Esp	Musica _Espanol	Music programming in the Spanish language
Urban AC	10001	17	Soft Rhythm and Blues	Soft_R&B	Soft_ R_&_B	Rhythm and blues with a generally soft tempo
Urban Contemporary	11010	26	Hip-Hop	Hip hop	Hip hop	Popular music incorporating elements of rap, rhythm-and-blues, funk, and soul
Urban Oldies	10000	16	Rhythm and Blues	R_&_B	Rhythm_and_Blues	A wide range of musical styles, often called "urban
Variety	00000	0	No program type or Undefined	None	None	
World Ethnic	10010	18	Foreign Language	Language	Foreign_Language	Any programming format in a language other than English
	10110	22	Public	Public	Public	Programming that is supported by listeners and/or corporate sponsors instead of advertising
	10111	23	College	College	College	Programming produced by a college or university radio station
	11101	29	Weather	Weather	Weather	Weather forecasts or bulletins that are non-emergency in nature

### **5.3 Program Type Name (PTYN) codes**

While PTYN is part of the European RDS Standard, the NRSC believes it is not commonly used in receivers designed for the U.S. Given the finite bandwidth available for RDS applications, it is recommended to not encode PTYN and instead use the available bandwidth for more useful features like RT+ song tagging, and for increasing RT transmission rates which can be of benefit to a large number of receivers.

### **5.4 Traffic programming (TP)/Traffic Announcement (TA) flags**

While stations are encouraged to encode the Traffic Programming (TP) flag if they provide traffic reports, and receiver manufacturers are encouraged to display that information, automatic receiver switching using the Traffic Announcement (TA) flag is discouraged. The NRSC understands that there have been complaints and confusion from listeners when the TA flag has been used to automatically switch a receiver.

Since the development of the TP/TA feature set in RDS, more efficient and advanced traffic reporting features have been made available to the general public. Instances of these include Global Position Systems (GPS) navigation devices with embedded FM or HD Radio receivers that can decode traffic incident data and display it on a map and provide re-routing assistance. Also, out-of-band data provided on the Internet and viewed on smartphones provides another way in which to convey this information to the public.

### **5.5 Music/Speech (MS)**

Stations are encouraged to set this switch appropriately according to the programming being broadcast. A value of 0 indicates speech is present and a value of 1 indicates that music is present.

### **5.6 Decoder Identification and Dynamic PTY indicator (DI)**

These bits indicate audio modes that are appropriate for use with the broadcast and to indicate if PTY codes are being switched dynamically. Typically in the U.S. a value of 0 on bit  $d_0$  is used if the audio on the station is monaural, and a value of 1 is used if the station's audio is in stereo.

### **5.7 Alternative Frequency (AF)**

AF is frequently implemented in Europe but AF has not been a widely used feature in the U.S. AF is primarily intended to enable receivers to find simulcast stations automatically. The PI code still controls whether a receiver will automatically switch. The PI code is the broadcaster's indication that the receiver should automatically switch, if this feature is enabled on the receiver. The same PI code transmitted on multiple stations means identical audio program content is being broadcast on those frequencies. RDS encoders are programmed to transmit a list of frequencies directing a compatible receiver where to receive the same programming. Its intended application in the U.S. would be to associate fill-in translators and boosters, or full service FM stations that fully simulcast another station in the area. AF-compatible receivers should verify that the station on the alternate frequency is transmitting the identical PI code as the current station and should not switch if the code is not the same.

It is important to stipulate that the purpose of the AF feature is not to control receivers in such a way that the equipment will switch between co-owned full-service FM stations that broadcast different content, or to link stations airing similar but not identical programming. The program content should be identical (*i.e.*, simulcast) between the AF frequencies. Stations should consider carefully the listener experience when



employing AF and ensure that the associated signals are transmitting the identical programming and to limit the time offset (delay) of simultaneous programming to under 1-2 seconds.

Stations that implement AF to link full-service, booster, or translator stations must not only set the list of alternative frequencies into the primary station's encoder but should also program complimentary values into encoders feeding all associated stations. Stations that choose to implement AF to link stations that air common programming only during certain times should not publish on any of the stations' encoders any AF channel numbers that refer to stations whose programming is not currently identical. If there are no stations whose programming is currently identical, then the AF list should be deactivated until such time as another station is again transmitting identical programming.

The European standard specifies two methods to transmit AF lists. The methods are called A and B. In the U.S., only method A is used. Method A can carry up to 25 alternative frequencies for an identical program. Information about this method is contained in IEC 62106 [2] beginning in Sections 6.2.1.6.2 and 6.2.1.6.3.

If a station is not explicitly using the AF feature it is recommended that the AF list be empty.

## **5.8 Clock Time (CT) Group**

This group is sometimes sent if a station is sending a time/clock and date reference. To conserve bandwidth, a single 4A group packet is sent every sixty seconds. If a station is not explicitly using this feature it is recommended that the group not be sent. For stations electing to send the 4A CT group, ensure that the RDS encoder is properly and continuously time synced to a reliable external time source. Also be sure that the CT local offset is correctly set to the local time zone. These offsets must also be adjusted in accordance with Daylight Saving Time changes. Stations transmitting inaccurate time or that have improper local CT offset settings can cause issues with receivers that use the CT to display time. Information about CT is contained in the IEC 62106 [2] beginning in Section 6.1.5.6.

## 6 USING RDS FOR PROGRAM ASSOCIATED DATA

### 6.1 Overview

Program Associated Data (PAD) is a term used to describe data (usually textual) that is associated with an audio program on the radio. PAD can vary depending on the type of material being aired on the radio station. The most common use of PAD currently via RDS is the current song title and artist data. However, there are many other types of PAD that can be encoded via RDS and displayed such as the song's album data, or in the case of non-music related programs, more information about the program. For example, a radio station running a live talk show may include the show's name, topic being discussed, the name of the guests and, perhaps the phone number to call in and participate in the show. The examples above are just some of the current and potential uses of PAD for RDS.

The importance of transmitting PAD data via RDS cannot be overstated. Broadcasters need to present a consistent user experience to listeners across all stations in a given market. When only a few stations in a market are transmitting PAD then this puts radio at a competitive disadvantage compared to other audio services, in particular Satellite Digital Audio Radio Service (SDARS) and Internet based streaming audio services that consistently provide PAD. The NRSC recommends that each and every station implement dynamic PAD over RDS.

Increasingly, more radios are being sold that include RDS including smartphones with FM radio capability. As these radios continue to be adopted by consumers; it is vital that broadcasters provide information to the listener about the current programming on the air. The ability to make this information available to the receiver display keeps terrestrial radio relevant with other forms of technology, such as portable music MP3 players, satellite radios, and Internet streaming audio applications via a computer, portable device or phone. For those stations also employing hybrid IBOC transmissions (both AM and FM), many of the concepts here also apply to the HD Radio system's Program Service Data (PSD) capability and can result in an overall improvement of PAD/PSD implementation across multiple platforms.

As outlined below, it is recommended that stations encode PAD in the RadioText (RT) field, and optionally in the Program Service (PS) field, as described in Sections 6.8 and 6.9 below.

### 6.2 Receiver display length considerations

For guidance on receiver alpha-numeric display length, and information on how many characters are required to display artist and title information over a typical over-the-air broadcast RDS data stream, receiver manufacturers are encouraged to consult the companion document to this Guideline, NRSC-R300. NRSC-R300 is entitled Program Associated Data (PAD) Field Length Study. [6] This report provides valuable information on song title, artist and album usage to help guide decisions when designing receiver displays.

### 6.3 Confusion between PS and RT

PS and RT are different fields in the RDS Standard and can be treated differently by each receiver. While the general listening public does not necessarily need to know what they are looking at (PS or RT), radio stations encoding RDS should understand how both fields relate to the end-user experience.

It is important to know that there are newer radios that support RT equally, if not better than they do PS. These new receivers display the RT in a more prominent manner. While so much of the emphasis in the past within the U.S. has been on the dynamic PS and its scrolling/framing effects, broadcasters need to be equally as aware of RT. Ignoring RT is ignoring the end-user experience that listeners on the newer devices now have, and this could be detrimental to the future of RDS-enabled radio displays.

Given that many feature-rich hand-held and portable receivers and advanced automotive receivers are already on the market, the future should bring more receivers that display RT in a prominent way, and the broadcast industry needs to make sure as much value is being placed on RT as on PS.

The NRSC has noted some stations that are doing dynamic PS scrolling/framing for PAD data, but are not transmitting PAD data in the RT field. It is recommended that stations in this situation should transmit PAD data in the RT field as well.

#### **6.4 Album name data**

All stations encoding RDS and supporting song title and artist are encouraged to transmit the album name (if applicable) using RT. Satellite radio, digital cable radio and Internet streaming stations often include the album name of the song they are currently playing. Many of the radio industry's web-sites and streaming initiatives show album name data. With RDS, broadcasters have the ability to provide the same information about the songs playing and achieve parity with other competing mediums.

It should be noted, due to space limitations, that the inclusion of album name information in the shorter, scrolling/framing/dynamic implementations of PS is not recommended.

#### **6.5 Data formatting, truncation, and capitalization**

Similarly, broadcasters are encouraged to review the quality of the data they are transmitting via RDS. Look for music libraries that have truncated, incomplete or inaccurate title/artist/album data. Stations may need to "groom" the music libraries to make sure the data is accurate.

When RDS was first implemented, it was the general consensus to capitalize everything sent because some radios did not support lower case characters. The majority of receivers in use today do not have this problem, so the use of proper capitalization is encouraged. If capitalization beyond what is grammatically correct must be used, the recommendation is to use it sparingly (and appropriately).

#### **6.6 Extra text ("Now playing...by...on")**

Some stations add the phrases "Now playing", then insert the title of the song, then "by" followed by the artist name, and then "on" and the station name. This practice is discouraged as discussed in NRSC-R300 (reference [6], pages 18-19). This extra text will lengthen the time it takes for a driver to observe the real information being conveyed on the display (*i.e.*, Title, Artist, Album). "Now playing" adds 12 characters to the required text length, and removes the key information (*i.e.* the Title) from the prime location (the beginning of the text string on the display).

#### **6.7 Data and song timing**

For stations that are running an audio delay, whether it be for purposes of synchronizing analog and digital audio in a hybrid IBOC transmissions, and/or for profanity deletion, it is strongly recommended that adjustments be made in the RDS PAD data transmission delay so that the audio and corresponding PAD are properly aligned at the receiver. Some hardware and software products on the market have this ability, and it is best to research this and spend some time "fine tuning" it. If this is ignored, it is possible that a song's PAD could show up before the song is on the air. When transitioning into another song, the new song's data can be displayed for a period of time while the old song is still playing, which is also an issue. For stations running in real-time (no delay) this alignment process is likely to be less of a factor, as the data is likely being sent to the RDS encoder at the same time the song is changed.

## 6.8 Using RadioText (RT) for PAD

RadioText (RT) is a 64-character field which can be transmitted via an RDS encoder to receivers. As mentioned above, the PAD content of the RT field can vary depending on the program that is currently airing on the radio station.

### 6.8.1 RT formatting

In the case of music, it is suggested to have the radio station's name, along with the song's title, artist and album information (if applicable) sent via RT. A separator between each of the fields is recommended, to give better readability for the listener. In the example below, a single hyphen character is used, - (ASCII Decimal 45, Hex 2D), although other delimiters could be used, such as a foreword slash, / (ASCII Decimal 47, Hex 2F).

Uses may vary, but here are some suggested combinations:

Station Name – Song Title – Song Artist – Song Album

*or*

Song Title – Song Artist – Song Album – Station Name

*or*

Station Name Song Title/Song Artist/Song Album

*or*

Song Title/Song Artist/Song Album Station Name

In some cases the song's album information is not available. This can be omitted, however, if the means to provide this information are available, it is recommended that album information should be listed.

National Public Radio (NPR) has conducted studies that indicate for informational/topical/spoken word formats, the suggested text might be:

Station Name – Program Name – Topic

Using a "live" example:

WZZZ – All Things Considered – Deficit Reduction

### 6.8.2 RadioText (RT) send rate

As discussed earlier, many newer receivers are displaying the RT in a more prominent manner. Almost every RDS encoder has an adjustment controlling how frequently the RT is sent compared to other data fields. The default settings of existing units are not necessarily set the best for a good end-user experience and require attention.

When an RDS receiver first tunes to a station with RDS and RT, it locates the RDS data signal and starts decoding. Many receivers are designed to wait until the RT has been sent twice before displaying to make sure it was received without any errors. If RT is not being sent frequently, this can take some time and result in excessive delay for displaying of RT information. RDS encoder defaults typically have a very slow RT send rate setting. Many encoders dedicate 75% of the bandwidth to the PS and 25% to RT. These default settings could take up to 15 seconds for the receiver to decode the RT under optimal

conditions. If there are any impairments such as multipath or a weak signal during those 15 seconds the process of displaying the RT can take longer. This, in turn, creates a bad end user experience. Couple this with the addition of the new RadioText+ (RT+) tagging standards (to be discussed later in Section 6.10) and it is clear that the RT transmission rate is an important component to check and consider optimizing.

It is recommended that the RT transmission rate be increased from the default values. The more frequently the RT is sent, the faster a receiver can decode and display it to listeners. This is even more important when it comes to the new portable RDS receivers on the market, because they prominently display the RT. These receivers are also more likely to be operating at lower signal levels due to antenna design (*i.e.*, just a headphone cable instead of a better antenna found in mobile receivers). These portable receivers are also more likely to be used in areas where there is multipath or other signal impairments (*i.e.*, inside buildings).

Before adjusting the RT send rate on the RDS encoder, the consequences of this should be considered. By increasing the send rate, a trade-off is being made on other RDS functions. As previously mentioned, the RDS signal operates at a low bit rate, with a useful capacity of approximately 670 bps. When the RT rate is increased, other data types may suffer as fewer bits will be available for these functions. For instance, the PS will be sent less frequently, and, accordingly, adjustments should be made to that field to maintain a good user experience. For stations that use other RDS “specialized” features contained in ODA groups, such as Traffic Message Channel (TMC), make sure the settings being changed do not impact these services. Stations in this situation may need to reduce their RT sending rates down as a compromise between a better RT experiences for the listener and making sure the station is meeting its ODA obligations.

A recommended RT sending rate has been developed based on field testing with various RDS receivers on the market. The benchmark for developing these recommended settings was to get the information sent using RT to display in optimal reception conditions 3-4 seconds after tuning to the station, or after the RT data had been changed (*i.e.*, a new song or program element had come on). See the encoder-specific recommendations in Table 3.

A display of RT in 3-4 seconds is the optimal experience. Under bad signal conditions, display will take longer. Even with the recommended settings, under poor reception conditions, it can take 10 or more seconds for RT to display. If the RDS encoder has factory default RT send rates a receiver may take 30 (or more) seconds and/or perhaps never resolve RT in these environments. The NRSC encourages RDS encoder manufacturers to consider using these recommendations below as the default settings for new units.

It should be noted that the RT message should not change for a minimum of three times the transmission time. With the settings below, it is recommended that the RT remain the same for a minimum of 15 seconds. Longer durations are preferred. Automation playback systems or other RDS metadata solutions should not update the RT too often.

If making adjustments to your encoder, be sure to read Section 6.9 about Program Service (PS) scrolling delay adjustments that should also be considered when making this change.

**NRSC-G300-A**

**Table 3: Recommended RadioText (RT) send rates for stations with no significant ODA use**

Note: these settings may interfere with any special ODA groups being transmitting such as leased traffic or other data. When transmitting ODA data, it is best to consult with the station's corporate engineering staff or the company that is leasing the data to ensure there is no interference with these services.

Encoder Type(s)	Recommended Setting	RDS group type / feature			
		0A PS (%)	2A RT (%)	3A (%)	RT+ ODA (%)
Inovonics 711 Audemat FMB1, FMB10 †	RT_RATE=1	45	50	1	4
Inovonics 712, 713 †	DRTS=9	63	32	1	4
Inovonics 720, 730 *	DRTS=9	24	71	1	4
Audemat (Worldcast) FMB-50, FMB-80 †† Burk RDS Master † BW Broadcast RDS3 †† Kvarta RDS1000 ††	GS=0A,2A,2A,2A	24	71	1	4
Pira32 ††	GRPSEQ=0222	24	71	1	4
DEVA SmartGen Mini, 4.1, 5.0 ††	SQC=2A, 2A, 2A, 0A, 2A, 2A, 2A, 0A, 2A, 2A, 2A, 0A, 2A, 2A, 2A, 0A, 11A, 2A, 2A, 0A, 2A, 2A, 2A, 0A, 2A, 2A, 2A, 0A, 2A, 2A, 2A, 0A, 2A, 2A, 2A, 0A, 11A, 2A, 2A, 0A, 2A, 2A, 0A, 2A, 2A, 2A, 0A, 2A, 2A, 2A, 0A, 2A, 2A, 2A, 0A, 2A, 2A, 2A, 0A, 11A, 2A, 2A, 0A, 3A	25	69	1	5
2wcom C02, C04 †††	2A, 2A, 2A, 0A, 2A, 2A, 2A, 0A, 2A, 2A, 2A, 0A, 2A, 2A, 2A, 0A, 11A, 2A, 2A, 0A, 2A, 2A, 2A, 0A, 2A, 2A, 2A, 0A, 2A, 2A, 2A, 0A, 2A, 2A, 2A, 0A, 11A, 2A, 2A, 0A, 2A, 2A, 0A, 2A, 2A, 2A, 0A, 2A, 2A, 2A, 0A, 2A, 2A, 2A, 0A, 2A, 2A, 2A, 0A, 11A, 2A, 2A, 0A, 3A	25	69	1	5

† Many legacy encoders do not support integrated RT+ from the manufacturer, but 3<sup>rd</sup> party hardware or software solutions exist to enable these features.

\* Requires firmware upgrade of 2.6 or higher to achieve desired group sequence.

†† May require firmware or software upgrade to enable integrated RT+ features.

††† Requires ARCOS configuration software. Encoder -> Dataset -> General -> Group Sequence. GS= string, not required. Replace 11A with desired RT+ ODA location. Encoder needs RT+ AID configured and 3A and RT+ ODA specifically shown in Group Sequence and AUTO\_RTPLUS enabled to use integrated RT+ transmission feature.

**Table 4. Recommended group sequence percentages for stations with TMC Traffic ODA use**

*Note: These group sequencing benchmarks are suggested for stations running Traffic Messaging Channel (TMC). Generally, TMC requires 25% of RDS bandwidth to be allocated to its specific ODA. Specific providers will likely have a customized group sequence setting specific to their service and encoders. The NRSC encourages TMC providers to provide optimized group sequencing for RT 2A transmission.*

RDS group type / feature				
0A PS (%)	2A RT (%)	8A TMC (%)	3A (%)	RT+ ODA (%)
24	45	25	2	4

### 6.8.3 RT length padding

To combat display problems on legacy receivers, some RDS encoders give the option to always send 64 characters in RT. If enabled, when the encoder sends something under 64 characters, it adds spaces to the RT data so as to always transmit 64 characters. It is believed that few, if any, receivers still need this option. For encoders with this ability, it is recommended that this padding feature be turned off.

The longer the RT is, the longer it takes to transmit. By always transmitting 64 characters, there will always be the maximum delay. Most receivers do not display the RT data until it has been fully received without errors twice. The process of displaying RT data to the receiver is being slowed down unnecessarily in many cases. Look for settings related to short RT versus long RT. Unfortunately, with some legacy encoders, this option cannot be turned off.

## 6.9 Using scrolling Program Service (PS) for PAD

NRSC-4-B does not support using the Program Service (PS) field for PAD, as it is a single, static 8 character field. However, use of a “dynamic,” “framing,” or “scrolling” PS is a common practice within the U.S. Provided here is some best practice information for those stations that elect to provide PAD data via dynamic PS.

The PS is an 8-character field that was designed to describe the radio station and remain static (*i.e.*, never change or change only intermittently). Many of the early RDS receivers displayed *only* this field prominently on the display. Over time, the use of the PS has evolved into a dynamic (*i.e.*, changing) “scrolling” or “framed” display. Many stations in the U.S. frequently change what is in this PS field to interleave (or scroll) not only the station name but song artist, title, advertisements, promotional and other messages.

Because there is a limitation of 8 characters in this field, many of the messages stations want to display do not fit. RDS hardware and software vendors have developed solutions to take a long string of characters and put it into the PS field 8 characters at a time, with a delay in between, creating a “scrolling” or “framing” effect. The interval between these frames is the PS scroll delay. This delay is an adjustable setting in most RDS hardware and/or software products. It should be clear, in this specific section, that this delay is the time a particular 8 character PS field remains unchanged, and not the number of individual 0A PS packets that are sent out during this time. This could also be described as the PS field change rate.

Stations with low PS field change rates may have found the radio receiver dropping the 8 character PS frames periodically. It has been found that many stations have this scrolling delay set too low (*i.e.*, not enough delay) and when the receiver has impairments (such as multipath) the PS frames drop. With RDS encoder defaults, stations running a delay on their PS at under 2.0 (two) seconds were already prone to this.

In addition, because PS was originally intended to be 'static' some receivers interpret a changing PS to be a fault and suppress any PS display until at least three receptions of the same text have been received.

When the recommendations above in Table 3 and



Table 4 for an aggressive RT send rate are followed, then the receivers that prominently display the PS may start dropping frames, even under optimal conditions. Again, this is due to the data rate limitations of the RDS signal. Given this, a minimum delay of 4 seconds between PS frames is recommended. For more multipath-prone stations, or for stations that have chosen to have their RDS subcarrier injection level below 6% (4.5 kHz), this could be set closer to 5 seconds to improve PS performance.

### 6.9.1 PS formatting

In the case of music, it is suggested to have the radio station's name, along with the song's title, and artist information. Because of the limited amount of characters in the PS field, sending the song's album information via the PS field is not recommended.

Uses may vary, but here are some suggested combinations:

```
Station Name Song Title Song Artist
```

Using a "live" example:

```
WZZZ Fireflies Owl City
```

This would be broken up into several PS frames, which will be changed after the PS delay:

```
WZZZ  
Fireflie  
ireflies  
Owl  
City
```

Note, in the example above, the song title "Fireflies" has a length of 9 characters. The PS only supports 8 characters, so a framing technique has been employed.

National Public Radio (NPR) has conducted studies that indicate for informational/topical/spoken word formats, a suggested text might be:

```
Station Name Program Name Topic
```

Using a "live" example:

```
WZZZ All Things Considered Deficit Reduction
```

This would be broken up into several PS frames, which will be changed after the PS delay:

```
WZZZ  
All  
Things  
Consider  
nsidered  
Deficit  
Reductio  
education
```

Note, in the example above the word "Considered" has a length of 10 characters, and "Reduction" has a length of 9 characters. The PS only supports 8 characters, so a framing technique has been employed.

## 6.10 Using RadioText+ (RT+) for PAD

In Section 6.3 above, the importance of implementing PAD data within the RT field was stressed. Broadcasters are also encouraged to adopt the RadioText+ (RT+) tagging standard for PAD data in the RT field. [4]

RT+ is an additional ODA data stream defined in IEC 62106 Annex P that can be added to an RDS stream, identifying the text being encoded in the RT field. Until the RT+ Standard was developed, there was no way to know what the specific parts of the RT data were, from a hardware or software standpoint, and this is important for song tagging. RT+ offers the ability to classify different types of information (such as title) and their location within the RT field.

Because the RT field is so flexible, the receiver cannot make any assumptions as to what information is contained within, but RT+ bridges the gap and essentially allows for definition of what each part of the RT actually is. It also gives radio stations an “MP3 player feel” by making it possible to consistently show title, artist, and album on separate, defined areas of the display. That in turn makes for better readability for the listener.

The RT+ Standard was developed in 2005, by IRT, Nokia and WDR in Europe. It is an open standard, free of charge for use and implementation. This standard has been improved since 2005, it is now adopted by the RDS Forum, and, in the past few years several RT+ receivers have come to market in the U.S., including the Apple iPod Nano 5th, 6th, and 7th generation units which support this standard. In addition, Kenwood has supported RT+ in many models including 18 models for the 2012 model year. Microsoft also included RT+ support in its Zune line of products (which was discontinued).

The iPod offers the ability to “tag” the song for later download by pressing and holding the center button. The next time the listener connects the Nano to a computer and launches iTunes, the tagged songs may be viewed and purchased.

It is recommended that all broadcasters deploy RT+ tagging for Item.Title, Item.Artist, Item.Album, as well as StationName.Short and StationName.Long. These are the most commonly used RT+ fields in receivers today.

While most of today’s available receivers in the U.S. support just artist/title/album tagging, there are some other promising things that can be tagged. There are over 60 content types available for use. Looking at the list available, RT+ gives broadcasters the ability to tag phone numbers, websites, SMS text messaging campaigns, addresses and times and dates. As more smart receivers with RDS/RT+ support come to market, it is not hard to conceive a time when receivers will be able to act on other RT+ fields.

### 6.10.1 RT+ implementation for broadcasters

To add RT+ to an existing RDS stream, two Open Data Application (ODA) packets need to be broadcast in the RDS stream from the RDS encoder. The first type of packet is the 3A packet which identifies to an RT+ capable receiver that the station is encoding the RT+ standard. These packets shall be broadcast at least once every 10 seconds by the station as per IEC 62106 Annex P.6. By encoding with Application ID (AID) 4BD7, receivers that support RT+ know this station supports the RT+ standard. The contents of this 3A packet identify the ODA group that the RT+ tagging packets are located in.

The second ODA packet is where the RT+ tagging data is located. ODA is part of the regular RDS Standard and is a way to add additional functionality. These packets shall be broadcast at least once every 2 seconds as per IEC 62106 Annex P.6. Multiple ODA’s can be running on a single RDS stream, but they must each be in a different “logical” numbered location. In the U.S., the NRSC-4-B Standard specifies valid ODA group locations of 5A, 6A, 7A, 8A, 9A, 11A, 12A, 13A.

It is important to note, if a station is broadcasting any traffic or other leased data applications using RDS, the ODA group(s) these services are using should be confirmed with the station's corporate engineering staff, or the vendor who is leasing the data. RT+ must be put on a different ODA, or there will be a conflict.

In the RT+ ODA packet, there are three important fields:

- **Item Toggle bit** is an important concept to understand in the RT+ Standard. In brief, every time a new "Item" changes, this bit should be toggled. It is a single bit, meaning there are only two values for it, 0 and 1. Essentially, this bit should only change when a programming element is changing. The best way to relate to this is a song. When a song comes on, this bit should be set to 0 for the entire duration of the song. When the song is over, and the next song is aired, the bit should be set to 1. Changing the toggle bit signals the receiver to purge anything in memory related to ITEM. This clears content types 1-11 which includes title, artist, album, and other song data from the receiver. The next song played will have newer content types and start/length markers that it would then apply.
- **Item Running bit** essentially states that the current Item being displayed in the RT+ and RadioText is actually running, or "on the air." In most cases, this is set to 1.
- **Content Types and Markers** – each RT+ ODA tag allows for two "tags." Each tag consists of a Content Type, Start Marker and Length Marker. The Content type is a number from 0-63 that identifies what type of tag the text is. The Start and Length markers define where in the RadioText (RT) that field begins and where it ends. These are both 0 based numbers, so the counting has to start from zero. Alternatively, these can just be counted and then from the result, subtract one.

#### 6.10.1.1 Tag 2 length logic inversion

Note that in the RT+ Standard the Length on Tag 2 is 5 bits instead of 6 (like Tag 1) which limits Tag 2 to 32 characters. It is recommended that when developing RT+ solutions to keep this in mind and dynamically flip the tags if the second one exceeds 32 characters but the first is under 32. Given that the RadioText is only 64 characters in length, if Tag 2 had 33 or more characters, then the length of Tag 1 must be 32 or smaller and could easily fit in the second tag. The RT+ standard in Annex P of NRSC-4-B calls for this action in Section P.5.2, however this point can be easily overlooked.

#### 6.10.1.2 RT+ interleaving – having multiple RT+ tags per single RT

By understanding the Item.Toggle bit, it can be seen that a receiver will cumulatively store to memory any supported RT+ field. This can occur on multiple RT+ tags on a single RT line, and even across multiple RadioText transmissions, so long as the Item Toggle bit is held constant. The interleaving feature of the RT+ Standard allows for tagging of more than just two fields at once.

In fact, having only 2 RT+ tags per a single RT is very limiting, especially when encoding information in all of the 60+ RT+ tags is considered.

For example:

```
WZZZ - Fireflies - OWL CITY - CD: Ocean Eyes
```

In the case above, 4 RT+ tags could be used: StationName.Short, Item.Title, Item.Artist, Item.Album:

## NRSC-G300-A

WZZZ  
Fireflies  
OWL CITY  
Ocean Eyes

All RDS encoder manufacturers and software solution providers are encouraged to support RT+ Interleaving in their products. This will encourage broadcasters to encode more than just standard Item.Title, Item.Artist, and Item.Album – and use the other 60+ RT+ content types. As broadcasters tag additional RT+ fields, this will also encourage receiver manufacturers to support the additional content types as well.

## 7 USING RDS FOR TRAFFIC INFORMATION

### 7.1 Overview

Broadcasters in the U.S. (and much of the world) use TMC for providing traffic information. In the U.S., TMC services are offered on a commercial basis by two service providers - Broadcaster Traffic Consortium (BTC) and Total Traffic Network (TTN). Most of the top 100 U.S. markets are covered by both services. For additional information go to [www.radiobtc.com](http://www.radiobtc.com) and [www.totaltraffic.com](http://www.totaltraffic.com).

### 7.2 Traffic using RDS-TMC

NAVTEQ's TMC uses Service Identifier (SID) = 7 for its TMC services which are transmitted in accordance with the latest version of the RDS-TMC Standard (14819 parts 1,2,3,& 6). The data is encrypted according to the conditional access specification. Single and multi-group messaging are supported, and the service includes Incident data (e.g., accidents, road closures, road construction etc.), real-time flow data derived by road sensors and GPS probe sources, and basic road-related weather conditions.

The maximum rate of data transmission is used, with type 8A groups being sent out every fourth RDS group using 25% of the available bandwidth, and tuning variants are used to reference other transmitters in the same and adjacent market areas. The data is sent to the RDS encoders using the Universal Encoder Communications Protocol (UECP).

#### 7.2.1 Location Table Country Code (LTCC) definitions – old and new

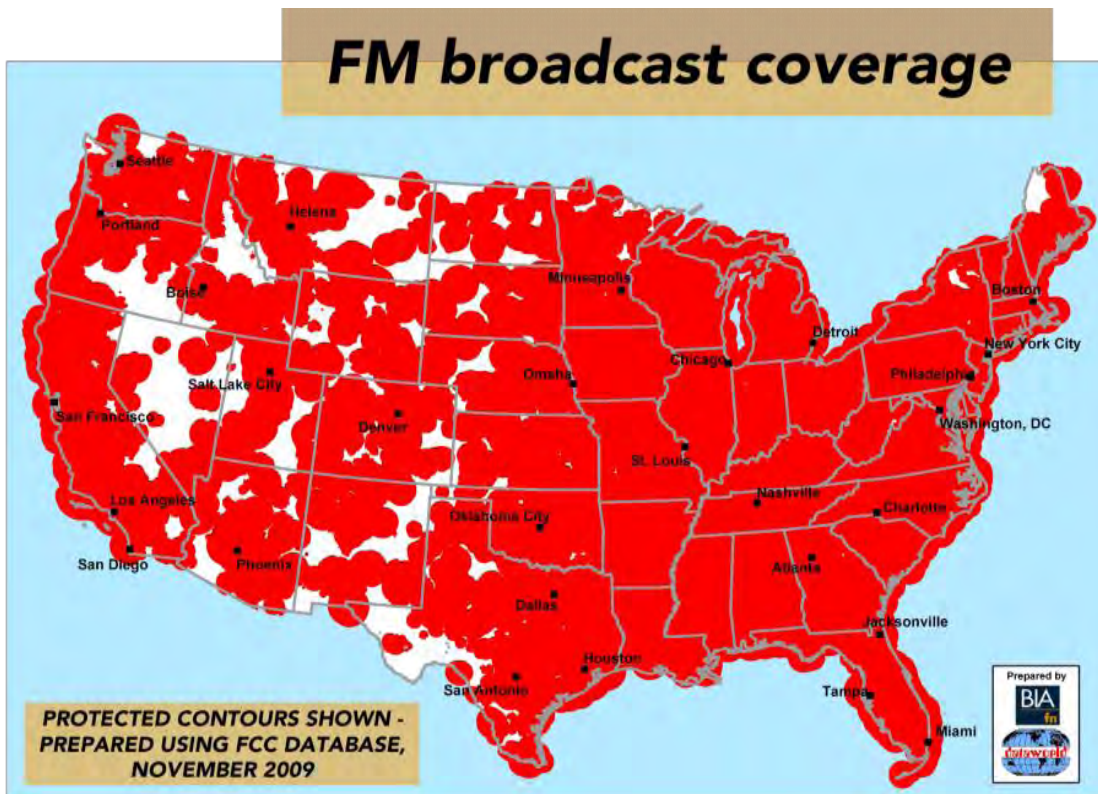
In RDS-TMC, each Location table is identified by a Location Table Number (LTN) together with a Location Table Country Code (LTCC).

In Europe, when RDS-TMC started, it was assumed that it was not necessary to transmit the LTCC as in all cases would be the same value as the first element of the PI code, which in Europe indicates the country of origin of the program audio (Program Identification Country Code, PICC). This assumption did not hold in the U.S., however. As a result, the RDS-TMC standard was modified and since 2009, LTCC should be explicitly transmitted, independently of PICC. All new RDS-TMC receivers must use LTCC and not derive the LTCC from PICC, unless LTCC is not broadcast by the RDS-TMC Service Provider.

## 8 Using RDS for Emergency Alerting

### 8.1 Overview

RDS and its ODA capability can be used for FM radio-based emergency alerts that enable first responders to create and send text-based digital alerts and messages to targeted recipients.<sup>4</sup> These messages will typically require a dedicated RDS-equipped FM receiver (or an FM radio-equipped smartphone with an "app") for reception; the messages will not generally be receivable over standard FM receivers that consumers typically have in their cars, homes or work places. The single point to multi-point messaging functionality of the broadcast of RDS utilizes the overlapping data signal of local FM radio stations to provide redundant emergency notification capability (see Figure 7). These RDS emergency alerts can deliver emergency information using RDS ODA messaging to fixed or mobile receivers, mobile phones, and other devices.



**Figure 7. FM broadcast coverage in the United States**

RDS emergency alerts can be designed as addressable, low-latency, high-value messages that can be received across local, county, state or nationwide coverage areas, depending upon which broadcasters are sending out the messages. A major design principle for RDS emergency alerts is typically to balance message delivery speed with non-interference to other uses, especially considering the limited effective throughput of the RDS data "pipe". RDS emergency alerting parameters can be structured to allow

<sup>4</sup> The RDS-based emergency alerting described here is supplemental to the audio-based emergency alerts that broadcasters transmit as part of their participation in the Emergency Alert System (EAS).

implementation of emergency alerting without disabling standard broadcast station operation of song title and artist info or traffic information.

Systems that generate RDS emergency alerts are a complement to cellular telephone-based systems, the most common of which is the Wireless Emergency Alerts (WEA), as well as outdoor warning sirens or telephone-based mass notification systems. Note that the performance of cellular telephone-based systems can be adversely affected by network capacity issues and power outages which occur in emergency situations. By contrast, the FM terrestrial radio stations that are used to transmit RDS emergency alerts are significantly more robust and have a much greater probability of staying operational during emergency situations.

### **8.1.1 Brief history of RDS Alerting in the United States**

In 1997, Sage Alerting Systems implemented RDS using 9A blocks to send out alert messages.

In 2005, the State Office of Homeland Security for Mississippi (following Hurricane Katrina) implemented the first statewide RDS emergency alerting system, which included installing broadcast equipment on 35 local FM radio stations and receivers in all 82 county emergency operations centers.

In 2008, the U.S. Federal Communications Commission released the First Report and Order on the Commercial Mobile Alert System (CMAS), adopting technologically neutral rules, specifically mentioning the use of RDS emergency alerts.<sup>5</sup> As a consequence, CMAS participants were free to adopt FM-based technologies for use of alerting on mobile devices-Part of the H.R. 5556 (109th): Warning, Alert, and Response Network Act.<sup>6</sup>

In 2010, the Federal Emergency Management Agency (FEMA) included FM-based RDS as a dissemination path for emergency alerts as part of the Integrated Public Alert and Warning System (IPAWS) architecture. The addition was a result of an one year study contract conducted by Northrop Grumman (reference: FEMA Contract No. HSFEMW-09-F-053).

In 2011, CEA published CEA-CEB25, Best Practices for Implementing Common Alerting Protocol (CAP) based Alerts for Consumer Electronics (CE) Devices (November, 2011). The best practice is used as a guideline for consumer electronics manufacturers to integrate and receive FM-based RDS alerts in common consumer electronic devices such as alarm clocks, smoke detectors.

Over the years, FM-RDS-based emergency alerting has gained support from the National Association of Broadcasters (NAB) and National Alliance of State Broadcast Associations (NASBA).

### **8.1.2 Use of RDS for Emergency Alerting Overview**

The only authorized emergency alert originators are first responders with credentials issued and maintained by Federal and State governments.<sup>7</sup> To issue an emergency alert, typically the alert originator will use a secure, web-based portal that allows emergency officials to create personalized Common Alerting Protocol (CAP)-formatted alerts and distribute them to multiple alerting paths including (but not limited to) EAS, WEA, and RDS emergency alerts. Messages can be geographically or

<sup>5</sup> The Commercial Mobile Alert System First Report and Order, PS Docket No. 07-287, *First Report and Order*, document FCC 08-99, file FCC-08-99A1.pdf

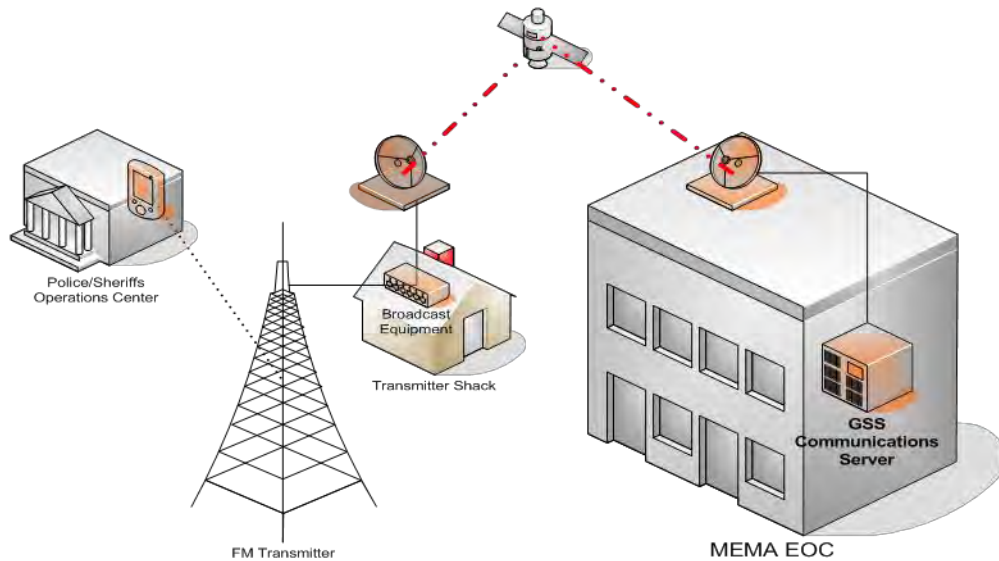
<sup>6</sup> Note that as of April 2014, no cellular service providers are known to have elected to implement CMAS alerts using RDS, however, a number of cellular handsets that include FM radio functionality can support RDS emergency alerts in limited areas using "apps" designed for this purpose.

<sup>7</sup> The principle authority for the IPAWS Program is Executive Order (E.O.) 13407, *Public Alert and Warning System*, dated June 26, 2006.

organizationally targeted based on the scenario. Messages can include alert originator-generated information as well as automated information directly from FEMA or the National Weather Service (NWS).

The typical methods of sending RDS emergency alert information to broadcast facilities are satellite and/or Internet communications systems. These methods can provide economical and reliable voice and/or high-speed data delivery to multiple locations. Satellite data delivery typically occurs much quicker than delivery using "daisy chain" communications among broadcast stations, as has been traditionally done by radio broadcasters to distribute audio alert messages using EAS. With EAS, if the daisy chain is broken, all stations below the broken link fail to get the critical alert information. Internet connectivity to broadcasters has been used in some cases.

Figure 8 is a diagram of the RDS emergency alert implementation of the Mississippi Emergency Management Agency in Jackson, Mississippi. The Figure shows how alert information flows from the Police/Sheriffs Operations Center, through the FM and satellite infrastructure, through to a Global Security Systems communications server.



**Figure 8. Example of how RDS emergency alert message information flows – this example is taken from an implementation by the Mississippi Emergency Management Agency Emergency Operations Center**

### 8.1.3 Typical Radio Station Installation and Testing

The Internet connection or satellite receive dish used to pass along emergency alert message information in an RDS-based system will be run through various tests to ensure correct operation. For a satellite system, the proper installation and mounting of the satellite receiver and dish will be reviewed to ensure optimal signal strength and reception. All grounding, external and internal wiring of the satellite dish and weather-proofing will be checked and integrity confirmed. Receiver indicator lights will be checked and confirmed functionally operational. The message loop test including the command center (from which RDS emergency alerts will emanate) will be tested to verify reception from command center interfaces.

The FM Radio Station configuration (see Figure 9 below) will then be run through various tests to ensure correct operation, including the following:

- Interface cables and connection to the transmitter
- Transmission levels



- Signal-to-Noise ratio
- Injection levels
- Functional operations

A test RDS emergency alert from an authorized alert portal such as IPAWS or local/state CAP-based web portal will be sent for broadcast system testing, verifying receipt by the receive-only satellite dish and receiver, processing by the RDS encoder and broadcast over the FM signal. The RDS emergency alert message will be verified with a designated wireless device held by the installation engineer.

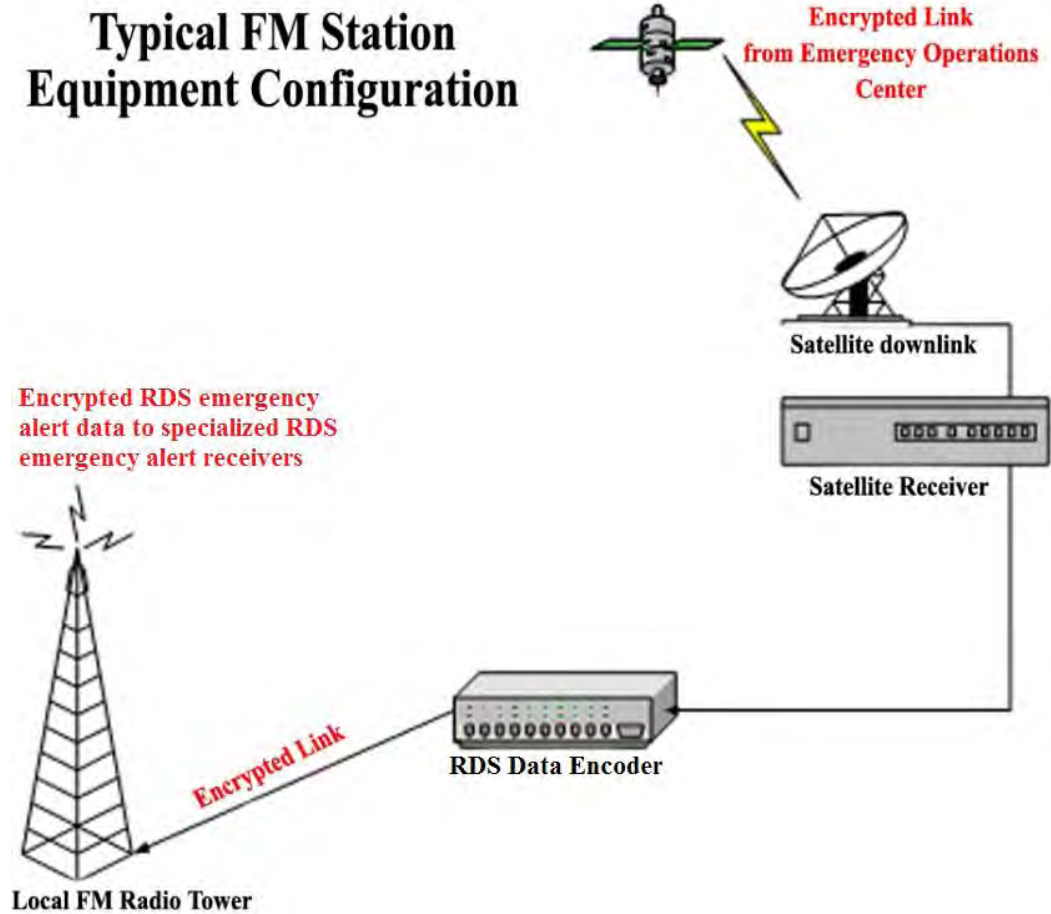


Figure 9. Station-specific alerting overview

## 8.2 Alert FM system

One example of a system that generates RDS emergency alerts is the Global Security Systems ALERT FM system.<sup>8</sup> Alert FM has a network of affiliated FM stations that have agreed to transmit Alert FM RDS emergency alerts. With Alert FM, RDS emergency alert messages are transmitted via RDS group 7A, formerly used by “RP” (RDS Radio Paging). An important attribute of using the heritage 7A RP RDS protocol is the ability to use battery saving features for handheld devices. The content of timing groups 4A

<sup>8</sup> See the Alert FM web page at [www.alertfm.com](http://www.alertfm.com).

and 1A indicate an ALERT FM station. Alert messages up to 240 characters are typically delivered in less than 60 seconds.

### **8.2.1 ALERT FM data input flow to the RDS encoder**

Similar to other RDS applications, messages intended for ALERT FM RDS emergency alerting are ingested, authenticated and prepared for transmission via centralized, off-site servers. Connectivity into the RDS encoder is nominally via satellite-delivered, one-way Multicast IP, using the UECP standards mentioned in Section 4.5. Use of satellite delivery keeps this "backhaul" alerting data private and offers high security, while use of Multicast IP allows for an addressing scheme that insures that each station's FM RDS encoder only transmits alerting messages appropriate to that station's coverage area – again in keeping with the design goal of system bandwidth efficiency and minimal intrusion into other RDS usages.

### **8.2.2 Typical radio station installation for ALERT FM**

As noted above, ALERT FM data is delivered via the IP output of a small satellite data receiver, which is normally placed on the same IP subnet as the IP address of the RDS encoder(s) at the transmit site, following the networking convention that Multicast packets traditionally do not "cross" a router. The affiliate FM station is either provided with a new industry-standard RDS encoder, or the existing RDS encoder is programmed to accept ALERT FM RDS alerting data. A proviso for using an existing RDS encoder is that it must have the ability to ingest Multicast packets, to read input data delivered via standard UECP2 protocols, and also be able to emit group 1A and 7A packets conforming to the latest CENELEC standard protocol IEC 62106/Ed.3.

### **8.2.3 Programming of the RDS encoder's Group Sequence with ALERT FM system**

Another benefit of being based upon the heritage RP standard is that when there is no alerting data present, there are no data-bearing Group 7A packets emitted. Therefore, once a station has selected a proper ratio of "public" (0A and 2A) and ODA packets (discussed in the following section), that Group Sequence (GS) has to be overlaid with an interlace of 7A packet "placeholders". Considerations include group ratios, alerting priorities and the unique programming language needed to accomplish this within each encoder, as discussed below.

#### **8.2.3.1 Group Sequence ratios**

The target ratio of RDS emergency alerts in the Alert FM system is a one-to-one interlace of alert message-bearing RDS 7A Groups with all other data-bearing groups, such as 0A (PS), 2A (RT) and ODA users like TMC (traffic info). Since it is possible that in the event of an emergency all such users may have something to contribute over their data channel, the design goal is to get the 7A-carried alerting message emitted as fast as possible, while still allowing other data users to emit their data, and while maintaining minimum recommended levels of throughput.

7A alert message-bearing groups only appear in the RDS data stream for the duration of the RDS alert message. Immediately on completion of the message, the order of RDS groups reverts back to the normal sequence, with no 7A groups added. Blank, null or filler 7A groups are not emitted.

Depending on the priority of the RDS alert message (see Section 8.2.3.2), 7A groups are normally sent at the start of each minute (as indicated by the output of a 4A clock time group) until a maximum of about 70 7A groups are emitted, or about 15 seconds, whichever comes first. While a one-to-one interlace of alerting groups may at first appear to indicate that 7A alerting takes up 50% of the RDS throughput, the normal use of only the first 1/4 of each minute drops the real per-minute throughput impact to a maximum of 12.5%.

Again, this assumes that each alerting message takes up a maximum possible length of around 240 characters. In the real world of 140-character-based Twitter and SMS messages, lengths approach half of that maximum RDS message length – or even less – which would again drop the throughput impact down to the single digits. And finally it is noted that Alert FM RDS emergency alert messages do not occur every minute, so the 7A alerting group impact as measured over hourly, daily or weekly timeframes starts to approach zero.

### 8.2.3.2 Alerting priorities

In addition to the normal Alert FM RDS emergency alert message activity described above, there is a special alerting mode wherein 7A groups are emitted throughout the entire minute, with messages starting at each 6 seconds. This is reserved for the highest-order (and shortest) alerts, similar to an Emergency Action Notification (EAN)-level warning in the broadcast EAS system, and allows for the fastest alerting response time, typically measured in the single-digit seconds.

There is also the possibility of deploying a slower, lower-priority 7A alerting system message, such as would be used for background information or some of the larger data fields in the FEMA IPAWS system. By design, this would have a slower 7A rate to prevent deleterious impact on other users as it would, in effect, be always on for the longer time period of a large message. This would require dynamically-switching the programmed Group Sequence inside each RDS encoder to a different sequence – with the goal of dropping the 7A ratio down to the low level of other ODA groups – unless a high-priority alert required immediate switching back to a higher 7A rate.

Again, due to the unique method that 7A groups are interlaced on-demand, as of this writing it appears that a slow-throughput feature would require an RDS encoder to have the ability to switch between two separate "switchable group sequences." That is a feature that does not currently appear to be offered by the major manufacturers of today's RDS encoders without at least the need of a reboot (system initialization) or other drastic measures.

### 8.2.3.3 Group Sequence programming example

Since different makes of RDS encoders have unique means of programming the actual as-aired sequence of RDS groups, it is important to note the difference between the programmed "Group Sequence" – as defined as a setup list of RDS groups in a certain order – and the actual order of the RDS groups that are sent out by the encoder.

An example would be of one popular RDS encoder which takes the programmed "Group Sequence" (GS) list and automatically adds other groups, such as the top-of-the minute 4A and top-of-the-second 1A timing groups. This encoder also interprets the entry of basic groups in the GS list – specifically 0A and 2A groups – as a simple ratio or repeating "wheel". This allows easy entry for a station which only carries PS and RT information, for example a simple GS of 0A,2A,2A would create a 33%-66% 0A-to-2A throughput ratio. Unfortunately, the same encoder interprets literally the number of requested groups for other uses such as TMC and RDS emergency alerts. For this encoder, Alert FM writes out the entire as-transmitted sequence of groups for the first 15 seconds, including the interlace of 7A alerting as well as any other ODA groups, in order to maintain the proper throughput balance for each user.

Therefore, each radio station may require a separate style of "Group Sequence" program or setup list in order to maintain a proper balance among normal users while still allowing proper entry and interlace of alerting-on-demand packets.

### 8.2.3.4 Injection levels

Due to the extremely small antenna aperture of some of the specialty FM receivers used to receive Alert FM RDS emergency alerts, ALERT FM has experimented with higher levels of RDS injection than those suggested in Section 4.2. Alert FM has observed over a long period of time that reliability of its RDS emergency alerts continues to improve in the FM station's fringe reception area as injection is increased to as high as 13%, above which limited improvement is noticed. However, such a high injection level is not recommended for systems with 67kHz subcarriers as this level may interfere with the subcarrier reception. This is experienced for small-aperture-antenna portable equipment such as Alert FM receivers, as well as for car radio reception of scrolling messages in fringe or noisy reception environments.

It is likely that the RF noise environment for radio reception will continue to deteriorate; therefore a stronger signal is better than a weaker one, purely from a reception point of view.

That being said, the 13% injection is a highly-aggressive and impractical number for most if not all US stations – although it should be noted that it is not rare to see those or higher levels while monitoring stations in U.S. markets. Alert FM's recommendation is to set the RDS injection level at or just slightly-below the injection level of the 19 KHz pilot; this gives the maximum balance of inaudibility of the RDS carrier with solid reception of scrolling messages out to the signal level point where most listeners would tune away.

## 8.3 NPR Labs emergency alerting ODA

Under funding from the U.S. Department of Homeland Security's Science and Technology Directorate, in 2013 NPR Labs developed an RDS emergency alerting ODA. This system is proposed as a modernization of the *Annex Q - Emergency Alert System Open Data Application* originally published in the NRSC U.S. RBDS Standard (April 9, 1998) through and including revision *NRSC-4-A* (April 2005).<sup>9</sup>

Specific goals of this effort include:

- Adopt updated conventions for the transmission of an ODA. Specifically, the 3A Beacon shall be transmitted at a constant rate and use of its message bits limited to static configuration data. All dynamic data is transmitted within the application group. Group 9A is commonly used for emergency alerting but this ODA may be transmitted using any available mode 1.1 application group. As RDS bandwidth is limited, no data is transmitted in the application group when the alerting system is idle;
- Provide a mechanism that makes delivery of essential, important event information (severity, certainty, and the like) a high priority;
- Provide a mechanism for transmitting an event-related textual message of up to 4,032 characters within the alerting ODA itself. Such a message provides at-risk populations with a richer context and understanding of the event;
- Provide a mechanism such that non-generic data types, such as Circle, Polygon, ANSI, and SAME Geo Codes, can be redefined for logical geographic regions, as needed. For example, the United States utilizes several types of Geo Codes for emergency alerts including FIPS codes for the identification of state and county. These state and county FIPS codes are not useful outside the United States;

---

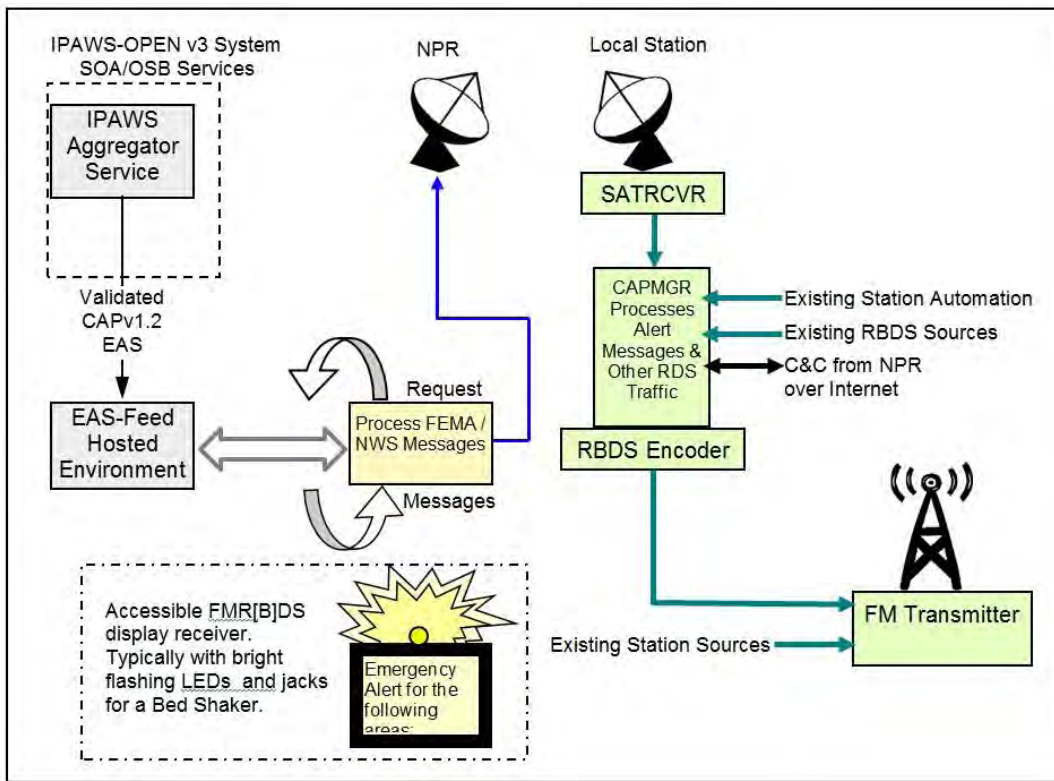
<sup>9</sup> Annex Q was removed from NRSC-4 so as to bring the NRSC and European versions of the Standard into closer harmonization, and because the NRSC was unable to identify a single instance of when Annex Q had been implemented either by a broadcaster or a receiver manufacturer.

- For the United States region, adopt new features of the IPAWS / CAP system while retaining the ability to transmit SAME data as specified in the original “Annex Q” EAS ODA.

**8.3.1 Technical overview**

Centralized servers gather emergency alert messages from FEMA/IPAWS, minimally process and log them, then transmit the messages over the Public Radio Satellite System (PRSS). The messages are receivable only by specifically-enabled PRSS receivers at interconnected stations.

At each participating station the messages are ingested by a firmware device (CAPMGR) that authenticates the message, determines its relevance to the station’s broadcast coverage area, and if relevant, forms the message into the modernized emergency alerting ODA and transmits the message according to that ODA specification.



**Figure 10. NPR Labs Emergency Alerting ODA system overview**

**8.3.2 The ODA in action**

Central to any ODA is the RDS group type 3A, the *Application Identification for Open Data*, also referred to as the AID Group or 3A Beacon. This group announces the transmission of a specific ODA (by *Application ID* number). Group 3A includes 16 message bits for use by the ODA and indicates the *Application Group Type* (if any) used for transmission of additional ODA data.

The alerting ODA is transmitted in *mode 1.1*, meaning a broadcaster must allocate an unused “type A” group—typically 9A—for transmission of emergency alerts. For broadcasts where emergency alerting is the only ODA running, the minimum recommended transmission rate is twenty-four (24) 3A Beacons per minute. For broadcasts where multiple ODAs are running, the minimum transmission rate remains twenty-

four (24) 3A Beacons per minute with the Alerting Beacon present a minimum of once every 5 seconds within the 3A sequence.

The message bits of the 3A Beacon convey the global configuration of the alerting ODA to the receiver. A *System ID* identifies a particular variant of the alerting ODA, where *System ID* = 1 indicates the variant with Geo Codes appropriate to the United States. A *Text Location Bit* (TLB), when set, indicates that alert related text is transmitted within the ODA. When cleared, the TLB indicates that alert text is transmitted using RT or eRT (Enhanced RadioText). Seven unassigned message bits are available for definition by variants of the alerting ODA. The bulk of data transmitted by the alerting ODA occurs within the application group itself.

The recommended transmission sequence can be broken into the four parts, as described in the following sub-sections.

#### **8.3.2.1 Receiver wakeup preamble**

The wakeup preamble is transmitted for 10 seconds prior to the start of rapid geo code sequence. Data included in the wakeup preamble allows the receiver to make an initial determination as to if the alert is meaningful to a particular user and also allows time for battery powered receivers to wake from a low power state prior to transmission of the geo codes.

The receiver wakeup preamble sequence must contain addresses 0 and 2 known as *Alert Control / Digest* and *Alert Identity Even* respectively. *Alert Control / Digest* contains the message type, message identifier, and message 'digest' for tracking purposes.

*Alert Identity Even* contains CAP short codes, such as Event Certainty, Event Severity and other event descriptors. It also contains the text segment iterators and the total number of 64-character text segments to expect.

The preamble may also contain address 1 *Alert Start / Duration* and address 3 *Alert Identity Odd*. The rapid geo code sequence gives priority to the actual geo code addresses (4, 5 and 6) but should also contain address 0 and 2. Each geo code should be transmitted at least twice as part of this sequence.

#### **8.3.2.2 Rapid geo code sequence**

The rapid geo code sequence indicates the geographic area or areas targeted by the alert.

#### **8.3.2.3 Text interleave sequence**

The text interleave sequence transmits the complete set of alert data with priority given to the text portion of the alert. The text interleave sequence includes the same data as the wakeup preamble and geo code sequence along with any text associated with the alert. Priority is given to transmission of the text segments during this sequence.

When alert text is transmitted within the ODA, each text segment should be retransmitted at least twice before advancing to the next segment. Address 2 *Alert Identity Even* includes a total count of the 64 character text segments associated with the alert, as well as a counter identifying the text segment currently being transmitted. A maximum 4,032 characters can be transmitted in any message.

#### **8.3.2.4 End of Transmission (EOT) marker**

The *End of Transmission* marker terminates the alert sequence. The minimum recommended transmission rate is two alerting application groups per second. The RDS group sequence is typically

configured to replace the alerting application group with some other group type when the alerting ODA is idle. For example, the 9A groups become 2A or 0A groups.

When transmission of the alert is complete, an *End of Transmission* (EOT) marker is sent and the application group goes silent.

### 8.3.3 ODA performance

NPR Labs and its development partners continue to gather metrics of this system in early 2014 and evaluate ODA performance under different bandwidth constraints and with different alert message lengths. The metrics presented below were gathered during four alert transmission scenarios involving bandwidth shared between alerting and commonly used RBDS services.

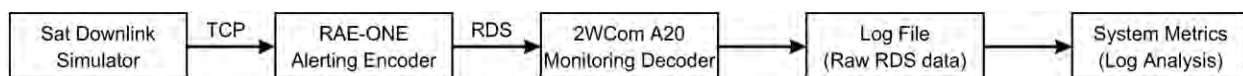
The four scenarios are the following:

- 1) *High bandwidth Alerting Service*. This scenario assumes that alerting is the only high bandwidth ODA running and so is given 50% bandwidth when an alert is actively being transmitted.
- 2) *Alerting and Traffic Message Channel (TMC) combined*. This scenario assumes these two high-bandwidth ODA each have a 25% bandwidth.
- 3) *Dynamic group order with Alerting and TMC*. Where two low-bandwidth ODAs stop during alert transmission. In this example TMC continues to run at 25% but the low bandwidth ODAs are stopped during alert transmission allowing about 35% bandwidth for the alerting ODA.
- 4) *Low bandwidth alerting Service with TMC*. Where two low-bandwidth ODAs continue during alerting transmission. This metric is illustrative only and not a recommended alerting mode.

The following should be noted on these metrics:

- The Wakeup preamble continuously transmits CAP short codes (start time and duration, event code, category, response, severity, certainty, etc.). These codes are for a receiver to display important event information while the text transmission is in progress.
- Each Example Alert targets 10 unique geocodes and all codes repeat during transmission. In these scenarios the geocodes are six digit FIPS codes denoting portion (digit 1), state (digit 2 and 3), and county (digits 4 through 6).
- Each text segment is transmitted 3 times before advancing to next text segment.
- NPR Labs plans additional testing in the future with over-the-air testing metrics and also interoperability testing and metrics of both the NPR Labs emergency alerting ODA and the AlertFM system on the same station. This data will be shared with the industry when it is available.

A block diagram of the laboratory configuration used for capturing the data is shown in Figure 11.



**Figure 11: System block diagram for measuring ODA performance metrics**

The alerting content for these tests was created by capturing an actual Common Alerting Protocol message from the IPAWS-OPEN aggregator's public portal. The message was saved to an XML file, keeping its CAP version 1.2 formatting intact<sup>10</sup>. To change the character count for each of the scenarios, the file's <description> field was edited to include the appropriate number of characters for a given metric. For example, the "512 char" metric originated from a CAP message that has 512 characters within the

<sup>10</sup> The *Common Alerting Protocol Version 1.2 OASIS Standard* can be downloaded at <http://www.fema.gov/emergency-alert-system-participants>

## NRSC-G300-A

<description> field. The number of FIPS codes in the <area> field of the CAP message was increased to 10.

Each scenario used a CAP message file edited with the appropriate character count within <description>. The RAE ONE encoder ingested the message from a custom Java application that simulated the TCP/IP server connection found on an IDC SFX4104R Satellite Receiver. This model of satellite receiver is used throughout the Public Radio Satellite System and the characteristics of its TCP/IP service are standard.

Once the message was ingested, the RAE ONE created an RDS signal that included the alerting data associated with that CAP message. The RAE ONE RDS signal output was captured and decoded using a 2WCom model A20 monitoring receiver, the output of the A20 monitoring receiver resulted in a plain text log file containing the raw RDS group data, one RDS group per line. The logging was started before the alert transmission began, and logging terminated after the alert transmission had finished. This log file represents the entire content of the RDS transmission, not just the 9A alerting group.

The log file data was analyzed 'by hand'; each log file was loaded into a text editor, where the start of each section of the transmission was identified manually. Counting the subsequent lines in the file determined the elapsed time at each of the identified points in the log, where each line of the log file represents one received RDS group, a duration of 87.579 milliseconds.

The various transmission bandwidths were achieved by adjusting the group sequence of the RAE ONE encoder. The metrics spreadsheet includes the actual group sequence information used for each scenario.

For those metrics intended to show shared-bandwidth performance with specified ODAs, group data was scheduled and transmitted continuously in those ODAs for the duration of the test. For example, the Example #2 group sequence includes additional ODAs in group 8A, 11A and 13A. As the other ODA groups, transmitting data continuously represents a "worst case" transmit time for the NPR Labs alerting data transmitted in the 9A group.



**NRSC-G300-A**

Example #1 - High bandwidth alerting service (group sequence also includes 2 low bandwidth ODAs)																															
Alerting GS=	9A	3A	9A	2A	9A	0A	9A	11A	9A	0A	9A	2A	9A	0A	9A	3A	9A	0A	9A	2A	9A	0A	9A	13A	9A	0A	9A				
Normal GS=	0A	3A	2A	2A	0A	0A	2A	11A	0A	0A	2A	2A	0A	0A	2A	3A	0A	0A	2A	2A	0A	0A	2A	13A	0A	0A	2A				
AID Seq=	9A, 11A, 9A, 13A																														
										Count / Bandwidth (Alerting Active)					Count / Bandwidth (Alerting Idle)																
<b>Measured transmit time</b>										0A	6	21.4%	PS	13	46.4%	PS															
										2A	4	14.3%	RT	11	39.3%	RT															
										3A	2	7.1%	AID	2	7.1%	AID															
										9A	14	50.0%	Alerting	0	0.0%	Alerting															
Preamble	10.5		10.5												11A	1	3.6%	iTunes	1	3.6%	iTunes										
Geocodes	6.1		6.1												13A	1	3.6%	RT+	1	3.6%	RT+										
Text + EOT	20.5		80.6												2.4522		28	100.0%	28		100.0%										
Total	37.1 Sec		97.2 Sec																												
<b>Max length message tx time</b>																															
4032 char																															
10.5		Preamble																													
6.1		Geocodes																													
634.8		Text + EOT																													
651.4 Sec		Total																													

**NRSC-G300-A**

<b>Example #2 - Alerting and TMC combined (group sequence also includes 2 low bandwidth ODAs)</b>																															
Alerting GS=	8A	0A	3A	9A	8A	2A	13A	9A	8A	0A	2A	9A	8A	0A	3A	9A	8A	2A	11A	9A	8A	0A	3A	9A	8A	0A	2A	9A			
Normal GS=	8A	0A	3A	0A	8A	2A	13A	2A	8A	0A	2A	0A	8A	0A	3A	2A	8A	2A	11A	0A	8A	0A	3A	2A	8A	0A	2A	0A			
AID Seq=	8A, 9A, 11A, 8A, 9A, 13A																														
														<u>Count / Bandwidth (Alerting Active)</u>							<u>Count / Bandwidth (Alerting Idle)</u>										
														0A	5	17.9%	PS				9	32.1%	PS								
<b>Measured transmit time</b>														2A	4	14.3%	RT				7	25.0%	RT								
														3A	3	10.7%	AID				3	10.7%	AID								
														8A	7	25.0%	TMC				7	25.0%	TMC								
Preamble	128 char			512 char										9A	7	25.0%	Alerting				0	0.0%	Alerting								
Geocodes	10.6			10.6										11A	1	3.6%	BTC				1	3.6%	BTC								
Text + EOT	10.9			10.9										13A	1	3.6%	RT+				1	3.6%	RT+								
Total	39.1			156.1										2.4522		28	100.0%				28		100.0%								
	60.6 Sec			177.6 Sec																											

<b>Example #3 - Dynamic group order with Alerting and TMC (2 low bandwidth ODAs stop during alert transmission)</b>																														
Alerting GS=	8A	0A	3A	9A	8A	2A	9A	9A	8A	0A	2A	9A	8A	0A	3A	9A	8A	2A	9A	9A	8A	0A	9A	9A	8A	0A	2A	9A		
Normal GS=	8A	0A	3A	0A	8A	2A	13A	2A	8A	0A	2A	0A	8A	0A	3A	2A	8A	2A	11A	0A	8A	0A	3A	2A	8A	0A	2A	0A		
AID Seq=	8A, 9A, 11A, 8A, 9A, 13A																													
														<u>Count / Bandwidth (Alerting Active)</u>							<u>Count / Bandwidth (Alerting Idle)</u>									
														0A	5	17.9%	PS				9	32.1%	PS							
<b>Measured transmit time</b>														2A	4	14.3%	RT				7	25.0%	RT							
														3A	2	7.1%	AID				3	10.7%	AID							
														8A	7	25.0%	TMC				7	25.0%	TMC							
Preamble	128 char			512 char										9A	10	35.7%	Alerting				0	0.0%	Alerting							
Geocodes	10.6			10.6										11A	0	0.0%	BTC				1	3.6%	BTC							
Text + EOT	8.3			8.3										13A	0	0.0%	RT+				1	3.6%	RT+							
Total	27.6			111.2										2.4522		28	100.0%				28		100.0%							
	46.5 Sec			130.1 Sec																										

**NRSC-G300-A**

<b>Example #4 - Low bandwidth Alerting with TMC (group sequence also includes 2 low bandwidth ODAs)</b>																												
Alerting GS=	8A	0A	3A	9A	8A	2A	13A	0A	8A	9A	2A	0A	8A	0A	3A	9A	8A	2A	11A	0A	8A	9A	3A	2A	8A	0A	2A	0A
Normal GS=	8A	0A	3A	0A	8A	2A	13A	0A	8A	0A	2A	0A	8A	0A	3A	2A	8A	2A	11A	0A	8A	0A	3A	2A	8A	0A	2A	0A
AID Seq=	8A, 9A, 11A, 8A, 9A, 13A																											
														Count / Bandwidth (Alerting Active)							Count / Bandwidth (Alerting Idle)							
														0A	7	25.0%	PS	10	35.7%	PS								
<b>Measured transmit time</b>														2A	5	17.9%	RT	6	21.4%	RT								
														3A	3	10.7%	AID	3	10.7%	AID								
														8A	7	25.0%	TMC	7	25.0%	TMC								
Preamble	128 char			512 char										9A	4	14.3%	Alerting	0	0.0%	Alerting								
Geocodes	17.9			17.9										11A	1	3.6%	BTC	1	3.6%	BTC								
Text + EOT	67.6			268.8										13A	1	3.6%	RT+	1	3.6%	RT+								
Total	96.1	Sec	297.3	Sec								2.4522	28	100.0%	28	100.0%												

Note: This scenario is illustrative of low bandwidth performance and is not recommended for use in Alerting Services due to the long latency in getting important information to the user.

## 9 RDS AND CHARACTER/FONT SETS

### 9.1 Overview

The RBDS and RDS Standards share a common font or character set, which is defined in a table in the RDS Standard. That is, radios compliant to either standard display the same character image (or glyph) for a given character code value.

However, this RDS character set is not the same as any character set used in the computer world, such as ASCII, ISO-8859-1 (Latin 1), Unicode, Arial font, etc. RDS was being designed approximately during the birth of the PC age, and at that time there was no clear need to use exactly identical font sets.

The RDS character set has many characters in common with ISO-8859-1, especially in the first 128 positions (lower 7 bit characters). The differences can be a problem, unfortunately.

Automation data is entered and stored in computer formats, so typically this is done in the character font set used in that country. Obviously, these data must be translated to RDS character set data for transmission, and the RDS receiver must be designed using the RDS character set as well.

### 9.2 Dollar sign display problems

The most common character translation problem is that some radios display the wrong character for the dollar sign (“\$”).

Table 5 shows the character maps for various standards. Two values are involved in the dollar sign: 0x24, which is where computer character sets locate the “\$”, and 0xAB, where RDS has this character located.

**Table 5. Character set translations for common dollar sign characters**

Character Set	0x24	0xAB
RBDS/RDS (IEC 62106 Table E.1)	¤	\$
ASCII / ISO 646 1994 / ECMA 6 7-bit Char Set	\$	n/a
ISO-8859-1 Latin 1	\$	«
Arial font set (or various other font sets)	\$	«

The two most common faulty behaviors are due to the following:

- 1) Receivers sometimes are displaying the ISO-8859-1 or Arial font equivalent graphic for 0xAB (which is ‘«’) rather than the RDS Standard graphic at 0xAB (the U.S. dollar sign, “\$”). However, other character sets have also been observed on radios;
- 2) Broadcasters sometimes are using the ISO-8859-1 value of 0x24 for transmission of ‘\$’, leading to RDS-compliant radios displaying the international currency symbol, “¤”. Broadcasters should be transmitting 0xAB for the U.S. dollar sign ‘\$’ in the RDS character map.

Note that the dollar sign is not the only character that is not the same in RDS vs. computer fonts; see the later sections for more examples.

U.S. broadcasters are using PS and RT text transmission for advertising, which sometimes include information about price. Prices in the U.S. are, of course, most commonly presented in U.S. dollars. The singer Ke\$ha spells her name with a dollar sign, and her popularity at her peak also helped highlight this issue.

**9.2.1 Recommended actions for equipment vendors**

The majority of receivers tested show correct RDS behavior. Best results for broadcasters in the current installed base can be obtained by using the RDS character tables in transmission. This is best achieved by:

- RDS equipment manufactures providing the feature (via original design, or if necessary by firmware upgrades) to have an option in their encoders to translate 0x24 to 0xAB. It is recommended that this setting be enabled by default on RDS encoders destined for use in the U.S.
- RDS software vendors providing the feature (via original design, or if necessary by software upgrades) to have an option in their encoders to translate 0x24 to 0xAB. It is recommended that this setting be enabled by default on all software destined for the United States.

Broadcasters encoding with RDS should be advised to upgrade their encoder firmware (option 1). If their encoder is no longer supported with firmware upgrades, broadcasters should seek software upgrades (option 2).

**9.2.2 Recommended actions for broadcasters**

First, determine whether the automation system or the RDS encoder is responsible for changing ISO-8859-1 characters to RDS characters. Check with the equipment or software makers to determine this.

It is also a good idea to verify what the transmission system is actually sending. Note that the fifth, sixth, and seventh generations of the iPod Nano from Apple exhibit the correct behavior.

Some test cases will also need to be constructed to verify both PS behavior and RT behavior. The strings in Table 6 may be inserted at the automation text interface to send text over PS and RT.

**Table 6. Test strings for testing dollar sign behavior**  
*Text is inserted at the automation system user interface.*

Desired string (as displayed in Arial font)	As encoded on computers	Intended transport	Correct result on RDS receiver
“\$«”	0x24, 0xAB	PS	The automation system or encoder should change the computer’s 0x24 “\$” character to 0xAB for RDS, and the receiver should display it correctly as a dollar sign; the automation system or encoder may keep the second character as 0xAB, or substitute another character (the “«” character is not defined in RDS/RBDS)
“\$«”	0x24, 0xAB	RT	

For equipment that is not correctly following the specification, the equipment provider should be contacted. It may be necessary to work with both the automation system and the RDS encoder manufacturers to determine where the fault lies and whether a fix is possible, but this will of course depend on the specific equipment and software being used.

**9.2.3 Recommended actions for receiver manufacturers**

Receiver makers are also encouraged to follow the RDS standard (IEC 62106 Table E.1 a/b) for decoding RBDS/RDS and getting the correct results onto receivers in the marketplace.

**9.3 Other 7-bit character map differences**

Table 7 shows some important seven-bit characters which will show up incorrectly if encoded or decoded with a computer font set instead of the RDS standard.

**Table 7. Important seven-bit characters that may show up incorrectly on receivers**

Hex	Dec	Arial	Courier New	ISO-646	RBDS / RDS <sup>†</sup>
24	136	\$	ℂ	\$	ⱪ
5E	129	^	^	^	—
60	130	`	`	`	
7E	131	~	~	~	-

*†Closest Times New Roman equivalent*

**9.4 Selected 8-bit character map differences**

Table 8, below, shows some eight-bit characters which might be used, and their RDS equivalents. Note that RDS font images (simulated here with Arial font) in the right-most column do not match Arial or Times New Roman. Computer fonts are not at all suitable for use in rendering RDS character transmissions. Receiver makers and app developers on smartphones must follow the RDS standard (IEC 62106 Table E.1 a/b) in order to get the correct display.

**Table 8. Important eight-bit characters and their RDS equivalents**

Hex	Dec	Arial	Courier New	RBDS / RDS <sup>†</sup>
80	128	€	€	á
85	133	...	...	ì
8B	139	<	<	Ç
91	145	‘	`	ä
92	146	’	’	ê
93	147	“	“	ë
94	148	”	”	î
95	149	•	•	ï
96	150	—	—	ô
97	151	—	—	ö
98	152	~	~	û
99	153	™	™	ü
9B	155	>	>	ç

<sup>†</sup>Closest Arial font equivalent

This is not intended to be an exhaustive list; these tables are intended to show that there are reasonably likely characters which cannot be transliterated directly from computer fonts to RDS radio fonts.

## 9.5 RDS character set and HD Radio character set

It should be noted that while the character sets above are for radios doing RBDS/RDS decoding, a separate character set (ISO-8859-1 Latin 1) is needed for radios processing iBiquity Digital HD Radio™ PSD/PAD messages (see [7]). RBDS/RDS uses the character set defined in IEC 62106 Table E.1 a/b. These character sets should not be confused between the two mediums.

## **ANNEX 1: BROADCASTER INFORMATION ON RDS USAGE – RDS USE CASES**

Information in this subsection was either obtained from the Internet or provided by individual broadcasters. The NRSC is looking to expand this subsection and encourages broadcasters interested in sharing information about how they are using RDS to contact the NRSC by email at [nrsc@nab.org](mailto:nrsc@nab.org).

### **Broadcaster Traffic Consortium**

The Broadcaster Traffic Consortium LLC (BTC) is a coalition of sixteen radio organizations across the U.S. and Canada. Working together, these organizations have formed a coast-to-coast terrestrial broadcasting network to distribute local traffic, weather and other map-related data, via radio technology. Seven of the top ten U.S. radio organizations are BTC members.

BTC provides a single point of contact focused on building a North American HD Radio Data and RDS-TMC network that offers a standardized data distribution channel. From member obligations as to implementation and operations, BTC can add or subtract the best broadcasters and their station signals as needed to meet the needs of our customers.

BTC has partnered with NAVTEQ, the leading provider of in-vehicle navigation and real-time digital map data, to serve end users with up-to-the-minute traffic, weather, fuel prices and more. BTC strives to drive HD Radio data content development, spurring the investment of broadcasters in HD Radio technology and increasing the value of HD Radio technology for the radio industry by complimenting HD Radio audio with utilitarian HD Radio data services.

BTC continues to research and test additional uses for HD Radio data services with partners other than NAVTEQ. For additional information visit the BTC web site at [www.radiobtc.com](http://www.radiobtc.com).

### **Clear Channel Media and Entertainment**

Clear Channel Media and Entertainment is using RDS for a large variety of functions.

In 2002, Clear Channel began to dynamically update the Program Service (PS) field to allow for display of Title and Artist to receivers which did not support the display of RadioText. This was in response to research showing that satellite radio subscribers (whose satellite radio receivers always display this information) found this function to be highly desirable. Subsequently, Clear Channel purchased hundreds of RDS encoders and worked to custom-develop firmware that would allow for enhanced service. Clear Channel also connected all of these devices to a centralized portal so that the consumer experience would be identical across all Clear Channel stations.

In 2004, Clear Channel launched RDS-TMC (Real Time Traffic) in cooperation with Siemens. Garmin, BMW and others soon followed. When Clear Channel looked to bring RDS-TMC to the U.S., it had never been done before in North America. Unfortunately there was a conflict between the RBDS Standard at that time and the RDS-TMC standard that was primarily European.<sup>11</sup> The RDS-TMC standard required that when a device was tuning to find an RDS-TMC station, it would first look to find a station with a PI code whose country code matched the country code of the map data being used.

---

<sup>11</sup> Note that with the adoption of NRSC-4-B in 2011, this conflict was resolved. See Section D.7.4 of the Standard [1].



## NRSC-G300-A

In the case of the U.S., TeleAtlas and Navteq had agreed that the U.S. would have a country code of “1,” and therefore any RDS-TMC receiver which was to follow the standard would ONLY look for stations which start with a PI code of “1.” Under the RDS Standard, the PI code is calculated from the call letters of the station, so no station east of the Mississippi could possibly have a 1xxx PI code.

Clear Channel clearly could not operate under both standards, so after verifying with the NRSC that the RBDS Standard was voluntary and after some investigation of a variety of stations that did not have their PI code set to the calculated value (many were set to the factory default of FFFF), Clear Channel chose to follow the RDS-TMC standard and carefully break Clear Channel’s compliance with the RBDS Standard in this one regard.

About 2 years after Clear Channel’s launch of RDS-TMC service, a few radios began to implement backward calculation of call letters from PI code. This created a problem since stations transmitting the RDS-TMC data with the “1” in the PI code (as just described) would likely not have their call letters calculated correctly. Primarily, these initial devices were test equipment like the Audemat Golden Eagle and not mainstream devices that were consumer focused. Then Microsoft launched ZUNE which also used back calculation to display call letters.

Clear Channel had worked with Apple on implementing song tagging over the HD Radio system. Later, Clear Channel worked with Jump2Go, Zune and Apple to develop song tagging over RDS using a combination of RadioText+ and another ODA for sending specific song IDs over the air in an encrypted format. While this song tagging ODA was being developed, Clear Channel inserted the ability to transmit the correctly calculated PI code data over the air. While a “1” is still transmitted over the air as the first digit of the PI code, the extended country code and the calculated first two nibbles of the PI code are also transmitted in the ODA packet. This allows new devices to correctly decode and display the call sign for Clear Channel stations using the modified PI code calculation method. Clear Channel also employs RT+ tagging of StationName.Short, and in this document, the NRSC encourages receivers to use this field to display the station name instead of back calculating PI codes.

Currently, Clear Channel operates about 450 stations with RDS. Of those stations, the vast majority are broadcasting RadioText+, Apple song tagging, MediaBase tagging (Zune and others), RDS-TMC, dynamic PS and RadioText with up-to-date Title and Artist data. Clear Channel also has a few experimental applications running.

In 2001, RDS in the U.S. was not gaining in popularity. Car companies were starting to take the feature out of their vehicles as it was a function that was not consistently used across broadcast stations. Now, RDS is the strongest it has ever been in the U.S. Clear Channel, through its development and implementation of services over RDS, believes it has helped to keep radio relevant for U.S. consumers and consumer electronics companies.

### **Cox Media Group**

- Some of the Cox Media Group markets began broadcasting an RDS signal as early as 1993, mostly just displaying the call letters.
- In June 2006 Cox began to support broadcast of Title and Artist information using RDS, and within the year had at least one station in each market operating
- In 2006 Cox began to work with and roll out the BTC project in many markets. The last-contracted Cox stations went on the air with BTC in August 2009.
- In December 2008 – 1st quarter 2009, Cox rolled out the “Jumpgate” devices for song tagging. All Cox stations with active RDS are song tagging.

## NRSC-G300-A

- Cox is sending Title and Artist and Station Name, scrolling this information using the PS field at a 2 second interval.
- Cox is also sending information for Featured Advertisers, scrolling on the PS during the spots.
- Cox is running the Station positioning statement, station web address, and featured advertiser additional information using the RT field.

### **Hawaii Public Radio**

(Submitted by Mr. Don Mussell, Consulting Engineer) Hawaii Public Radio (HPR) installed RDBS in the 2006 timeframe. It has really helped listeners identify HPR stations, and tourists know quickly where public radio can be found because most of the rental fleet in Hawaii has RDS equipped radios in their vehicles.

On Kaua'i, KKCR has had RDS since 1997, providing ID, scrolling slogans and announcements, AF for repeaters and translators. Other HPR uses of RDS include the following:

- KHPR: Station ID, scrolling slogans and announcements, AF for translator, and using the RDBS for activation of selected receivers by the local civil defense for various emergency notifications.
- KIPO: Station ID, scrolling slogans and announcements
- KKUA: Station ID, scrolling slogans and announcements, AF for translator
- KANO: Station ID, slogan

## ANNEX 2: RDS PROVIDERS LIST

**UPDATED OCT. 11 2012**

The providers listed in this Annex are known service providers or they have been **self-notified** as providing hardware and/or services to manage data for RDS applications. The suppliers listed herein have completed the form included in Annex 3 of the Guideline and submitted it to the NRSC, requesting inclusion in this list. An updated list is published as new items are added.

### IMPORTANT ADVISORY FOR USERS OF THIS LIST

**Neither the NRSC nor its members, participants or co-sponsors make any claim as to the suitability of this services or equipment for use in managing or transmitting RDS data.** Parties interested in managing RDS data need to verify for themselves that the provider, service and/or equipment is in fact suitable for their needs.

**Providers that are NOT on this list may very well be suitable for use managing RDS data.**

Suppliers that have submitted valid self-notifications are included here. The NRSC acknowledges that other providers may also be suitable, and encourages all service providers and manufacturers who offer suitable products or services to self-notify with the NRSC.

Anyone wishing to provide information to the NRSC as to the suitability or unsuitability of these suppliers should send an email to [nrsc@nab.org](mailto:nrsc@nab.org). Please include in this email the supplier's name and product or service(s) being discussed.

*(continued on next page)*

**ANNEX 2 - NRSC-G300-A, RDS Usage Guideline**  
**RDS Providers List – UPDATED OCT. 11 2012**

Company	Website / Contact Information	Nature of business	Description of services or product(s) provided	Date of Notification
Arctic Palm Technology, Inc.	<a href="http://www.arcticpalm.com">www.arcticpalm.com</a> <a href="mailto:csbuck@arcticpalm.com">csbuck@arcticpalm.com</a>	Software developments specializing in solutions for Broadcasters	Specializing in software for the broadcasting industry, Arctic Palm Technology, Inc. was founded in 1997 and based in London, Ontario, Canada. Combining our knowledge of the business of broadcasting with the technical skills to meet the needs of broadcasters and a strong commitment to service, there are over 1,200 stations in Canada, USA and around the world using one or more of our products. In addition to our award winning Center Stage Live and its Date Casting features for RDS/RBDS, web sites, HD Radio broadcasting, streaming services, Tunin.com, etc. we also have a line of "Paperless Studio" products for contest management, script management and work flow, call screening for Telos systems and an automated file transfer solution. With the popularity of social media, our new CSSocial add-on for our Data Casting Contesting and Call Screening updates Twitter and Facebook pages automatically or from talent postings.	8/31/12
Audessence Ltd.	<a href="http://www.audessence.com">www.audessence.com</a> <a href="mailto:tech@audessence.com">tech@audessence.com</a>	Equipment manufacturer	RDS encoders, audio processors, etc.	9/5/12
Deva Broadcast Ltd.	<a href="http://www.devabroadcast.com">www.devabroadcast.com</a> <a href="mailto:office@devabroadcast.com">office@devabroadcast.com</a>	Broadcast equipment manufacturer	Deva Broadcast develops and manufactures a wide range of RDS/RBDS encoders and decoders, modulation monitors, remote controls, off-air monitoring receivers and other systems for the broadcasting industry. The company was established in 1997 and is nowadays well known as a market leader and international provider of user friendly, cost effective and innovative broadcast products. All RDS/RBDS encoders developed and manufactured by Deva Broadcast are in compliance with the latest EBU (IEC) and NRSC Standards.	9/3/12

**ANNEX 2 - NRSC-G300-A, RDS Usage Guideline**  
**RDS Providers List – UPDATED OCT. 11 2012**

Company	Website / Contact Information	Nature of business	Description of services or product(s) provided	Date of Notification
Global Security Systems, LLC	<a href="http://www.alertfm.com">www.alertfm.com</a> <a href="mailto:mstraeb@gssnet.us">mstraeb@gssnet.us</a>	Broadcast-based emergency alerts using RDS	<p>Global Security Systems, LLC (GSS) is the systems integrator and service provider of GSSNet (satellite CAP-based EAS data delivery), ALERT FM (FM RBDS broadcast-based text emergency message system) and Alert Studio (web-based CAP-compatible audio/text/image alert origination portal). ALERT FM is a personal alert and messaging system that enables company emergency management officials to create and send digital alerts and messages, including NOAA weather warnings, workplace evacuation instructions, and other company emergency information to employees, board members, and other company officials based on geographic or organizational groupings. GSS has participated in the development of IPAWS-based systems, is a member of the Commercial Mobile Alert Service systems committee, and is actively involved with several EAS and CAP committees. The GSS nationwide GSSNet satellite delivery system for emergency alerts currently is in operation at over 300 locations in 16 states and growing daily, and includes the ability to generate and deliver CAP messages.</p>	9/11/12
Inovonics, Inc.	<a href="http://www.inovonicsbroadcast.com">www.inovonicsbroadcast.com</a> <a href="mailto:ben@inovonicsbroadcast.com">ben@inovonicsbroadcast.com</a>	Broadcast equipment manufacturer	<ul style="list-style-type: none"> <li>● Model 730 RDS/RBDS Encoder: full featured RDS encoder with LCD front panel display for setup and verification of information. Accessible via USB, RS232, TCP/IP, and UDP for remote updating of dynamic song title, artist information, ODAs, RT+, clock time and all RDS data functions.</li> <li>● Model 720 RDS/RBDS Encoder: RDS encoder with LCD front panel display for verification of information. Accessible via USB and RS232. Can be remotely updated to display song title, artist information and many other RDS data functions.</li> <li>● Model 703 RDS/RBDS Encoder: Basic functions of RDS supported. Programmed via USB, the Model 703 is meant to give stations an RDS presence with station identification and promotional text.</li> </ul>	8/30/12

**ANNEX 2 - NRSC-G300-A, RDS Usage Guideline**  
**RDS Providers List – UPDATED OCT. 11 2012**

Company	Website / Contact Information	Nature of business	Description of services or product(s) provided	Date of Notification
Kvarta	<a href="http://www.kvarta.net">www.kvarta.net</a> <a href="mailto:tmanev@kvarta.net">tmanev@kvarta.net</a>	Radio & TV equipment	<p>Kvarta is widely considered as a reliable producer of radio and TV equipment. Our RDS/RBDS encoders are growing in popularity due to their reputation of reliability, quality and functionality at exceptional prices. All our RDS/RBDS encoders have been designed for professional broadcast use and are fully compliant with the standards.</p> <p>We are supplying the following RDS/RBDS encoder models: RDS300, RDS500 and RDS1000.</p> <p>All our encoders support UECP protocol. Besides the dynamic PS and RT text display features that you can get from RDS300 and the RT+ and SNMP capabilities of RDS500, the RDS1000 our top class RDS/RBDS Encoder supplies all the other ODA applications (TMC, EWS, paging, etc.). RDS1000 also supports configuration and monitoring of the RDS/RBDS encoder from multiple points.</p>	8/31/12
Pira	<a href="http://www.pira.cz">www.pira.cz</a> <a href="mailto:mail@pira.cz">mail@pira.cz</a>	Production of complementary FM broadcast equipment	<ul style="list-style-type: none"> <li>• RDS/RBDS encoders</li> <li>• FM analysis equipment</li> <li>• RDS/RBDS analysis and consultancy</li> </ul>	9/3/12
2wcom Systems GmbH	<a href="http://www.2wcom.com">www.2wcom.com</a> <a href="mailto:wdrews@2wcom.com">wdrews@2wcom.com</a>	Development and production of broadcast products	<p>Basic and full-featured RDS/RBDS encoders with more than 15 years of experience in the market, fulfilling specifications like IEC 62106 und UECP 7.05.</p> <p>Additional features like automation system support, RDS/RBDS decoder (incl. full text TMC) inside the encoder and multi IP access available.</p> <p>Excellent references worldwide.</p> <p>Highly sophisticated RDS/RBDS decoders for measurement and control of all FM and RDS/RBDS parameters (incl. full text TMC decoding).</p> <p>Alarm support via email (SMS), SNMP and relay.</p> <p>Streaming of FM and RDS/RBDS data.</p> <p>Server Software to control large RDS/RBDS networks.</p> <p>Satellite receivers for distributing dynamic RDS/RBDS data to the transmission sites as embedded data or in separate PID.</p> <p>New: FM-MPX over IP or E1 (2 Mbit-line), incl. RDS/RBDS distribution.</p>	9/5/12
Worldcast Systems Inc./ Audemat	<a href="http://www.worldcastsystems.com">www.worldcastsystems.com</a> <a href="mailto:peterle@worldcastsystems.com">peterle@worldcastsystems.com</a>	Broadcast equipment mfg. / RBDS generation, analysis and monitoring	<p>RBDS encoders including the world class FMB50 and the affordable RDS Silver. RBDS analysis equipment including the industry standard FM-MC4 and versatile Navigator 100. 24/7 RBDS performance monitors Goldeneagle HD, Goldeneagle FM and FM Silver monitor. Expert assistance for all types of RBDS deployment including TMC, RT+, and other ODA's. Member of the RDS Forum since its inception.</p>	9/3/12

**ANNEX 3: RDS PROVIDERS LIST SELF-NOTIFICATION FORM**

The “RDS Usage Guideline RDS Providers List Self-Notification Form” begins on the following page.

# NATIONAL RADIO SYSTEMS COMMITTEE

---

---

## NRSC-G300-A, RDS Usage Guideline RDS Providers List Self-Notification Form

*Please submit completed  
form to:*

National Association of Broadcasters  
1771 N Street, N.W.  
Washington, DC 20036  
Attn: Science & Technology Department

Email: [nrsc@nab.org](mailto:nrsc@nab.org)  
Fax: 202-775-4981

This form is for suppliers of services and equipment managing and delivering RDS and/or HD Radio Program Associated Data (PAD) in accordance with the techniques discussed in the NRSC-G300-A Guideline. Please complete this form and submit it to NAB by mail, fax, or email, using the contact information above.

Completed forms will be reviewed by the NRSC and if found complete, the equipment described therein will be added to Annex 2 of the NRSC-300-A Guideline, which lists providers of RDS data management services or equipment.

### *Company information:*

COMPANY		
NATURE OF YOUR BUSINESS		
ADDRESS		
CITY		STATE
		ZIP CODE
PHONE (MAIN NUMBER)	FAX	WEBSITE

---

---

### *Contact information:*

NAME		
TITLE		
ADDRESS		
CITY		STATE
		ZIP CODE
PHONE	FAX	EMAIL ADDRESS

---

---









**CEA**<sup>®</sup>  
Consumer Electronics Association

